

9-Channel High Definition Video Decoder

ADU8709-E-V3



Features

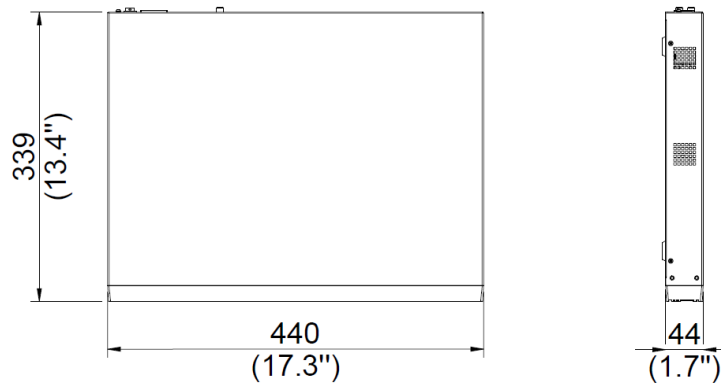
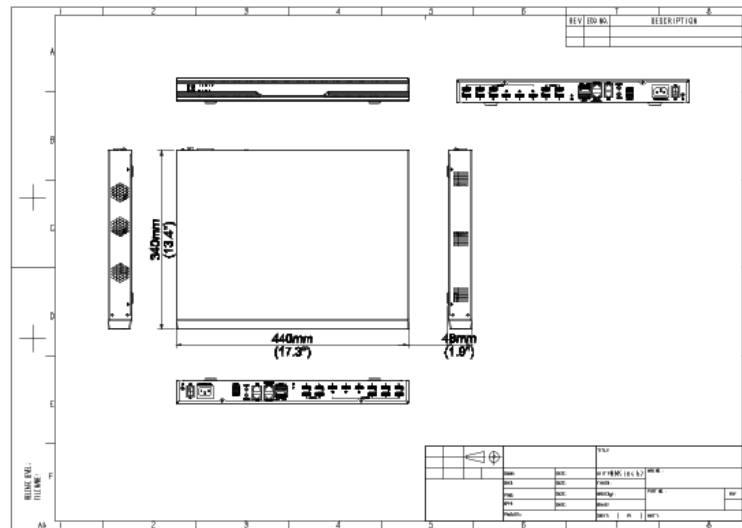
- Embedded Linux OS ensures 24/7 stable operation and prevents hackers and viruses.
- HDMI video output interface.
- 4 HDMI inputs.
- Maximum decoding resolution of 24MP, up to 16*1080P@30Hz decoding capability for each channel.
- Up to 4K@30Hz output resolution, compatible with mainstream display devices in the industry.
- Supports window opening, roaming and picture-in-picture. Up to 36 windows are allowed for each output channel.
- Supports multicast, direct stream from camera.
- Supports virtual LEDs.
- Supports small pixel pitch LEDs.
- Supports turning on/off video wall screens.
- Supports standard H.265, H.264, MPEG4, image compression formats.
- Supports decoding audio in G.711A, G.711U, MPEG2, AAC, G726, G.722 formats.
- Self-developed decoding algorithm offers high decoding efficiency and clear images.
- Allows to configure and manage the device on a central server.
- Supports decoding SD and HD video.
- Supports local and remote upgrade.
- Supports decoding streams of other manufacturers through onvif protocol.

Specifications

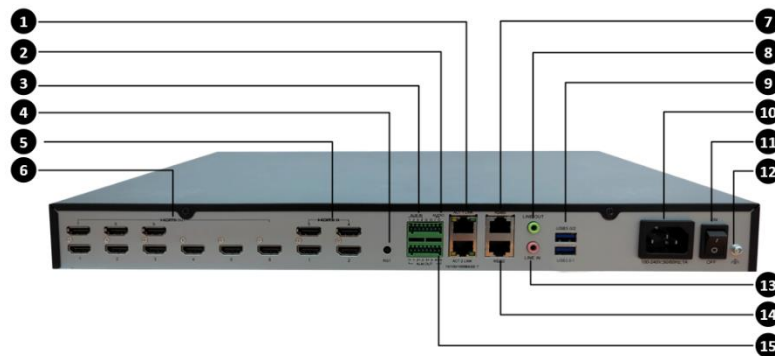
Output	Description
Output Channel	9-ch HDMI X 2, 10 BNC
Video Output Resolution	4K interface: 3840 x 2160@30 Hz, 1920 x 1200@60 Hz, 1920 x 1080@60 Hz, 1600 x 1200@60 Hz, 1440 x 900@60 Hz, 1280 x 1024@60 Hz, 1280 x 720@60 Hz, 1024 x 768@60 Hz (4K interface: 1, 2, 4, 5, 7, 8, 10, 11) 1080P interface: 1920 x 1200@60 Hz, 1920 x 1080@60 Hz, 1600 x 1200@60 Hz, 1440 x 900@60 Hz, 1280 x 1024@60 Hz, 1280 x 720@60 Hz, 1024 x 768@60 Hz (1080P interface: 3, 6, 9, 12)
Input	Description
Input Channel	4-ch HDMI (video only)
Video Input Resolution	4K interface: 3840 x 2160@30 Hz, 1920 x 1080@60 Hz, 1920 x 1080@50 Hz, 1920 x 1080@30 Hz, 1600 x 1200@60 Hz, 1440 x 900@60 Hz, 1280 x 1024@60 Hz, 1280 x 720@60 Hz, 1280 x 720@50 Hz, 1024 x 768@60 Hz (4K interface: 1, 2) 1080P interface: 1920 x 1080@60 Hz, 1920 x 1080@50 Hz, 1920 x 1080@30 Hz, 1600 x 1200@60 Hz, 1440 x 900@60 Hz, 1280 x 1024@60 Hz, 1280 x 720@60 Hz, 1280 x 720@50 Hz, 1024 x 768@60 Hz (1080P interface: 3, 4)
Decoding	Description
Decoding Format	H.265, H.264, MPEG4
Decoding Capability	6ch-24MP@30Hz, 12-ch 12MP@30 Hz, 12-ch 4K@30 Hz, 48-ch 1080P@30 Hz, 108-ch 720P@30 Hz
Screen Control	Description
Number of Windows	36 x number of output channels
Splicing	M x N (the number of windows cannot exceed the number of output channels)
Input Interface	Description
Audio Input	1 x terminal audio input (reserved) 1 x 3.5mm audio input (reserved)
Alarm Input	4 x terminal alarm input (reserved)
Output Interface	Description
Audio Output	1 x terminal audio output (reserved) 1 x 3.5mm audio output, dual channel
Alarm Output	4 x terminal alarm output (reserved)
Other Interfaces	Description
Serial Port	1 x RS232, 1 x RS485
Network Interface	2 x GE port, RJ45 interface, half-duplex/full-duplex Ethernet, 10M/100M/1000M Base-T adaptive
USB	2 x USB 3.0
General	Description
Power Supply	100 V ~ 240 V AC; 50 Hz/60 Hz
Max Power Consumption (W)	40
Product Dimensions (W x H x D) (mm)	440 x 339 x 44

Weight (Kg)	3.90
Operating Temperature	-10 ~ 55° C
Operating Humidity	10% ~ 90% (No-condensing)

Dimensions



Interface



No.	Name	Description
1	Ethernet	GE port, RJ45 interface, half-duplex/full-duplex Ethernet, 10M/100M/1000M Base-T adaptive
2	AUDIO	terminal, audio signal input/output (reserved)
3	ALM IN	terminal, alarm signal input, Boolean input (reserved)
4	RST	Reset key, press to restore the device to factory defaults
5	HDMI IN	HDMI video signal input
6	HDMI OUT	HDMI video signal output
7	RS485	Serial port, used as RS232 Console or RS485 for device maintenance or controlling power distribution boxes
8	LINE OUT	Coaxial 3.5mm audio output port
9	USB 3.0	Used to upgrade the device
10	Power input	Power input interface
11	Power switch	Turn on/off the device
12	Grounding terminal	Grounding terminal
13	LINE IN	Coaxial 3.5mm audio input port (reserved)
14	RS232	Serial port, mainly used to turn on/off video wall screens
15	ALM OUT	terminal, alarm signal output, relay output (reserved)

Zhejiang Uniview Technologies Co., Ltd.

No. 369, Xietong Road, Xixing Sub-district, Binjiang District, Hangzhou City, 310051, Zhejiang Province, China

Email: overseasbusiness@uniview.com; globalsupport@uniview.com

<http://www.uniview.com>

©2023-2024 Zhejiang Uniview Technologies Co., Ltd. All rights reserved.

*Product specifications and availability are subject to change without notice.

*Despite our best efforts, technical or typographical errors may exist in this document. Uniview cannot be held responsible for any such errors and reserves the right to change the contents of this document without prior notice.