

New RG-ES0/ES100 Series Unmanaged Switch Family

DATASHEET

[Explore More](#)

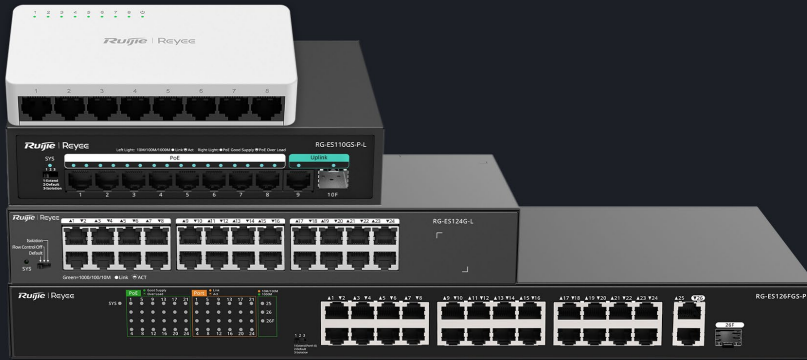


Highlights

- Visible on Ruijie Cloud Even Unmanaged
- Intelligent and Secure CCTV Network
- Intelligent PoE Management
- High-Quality Design

Highlight Features

New RG-ES0 RG-ES100 Series Unmanaged switch



Plug & play



Max. 30W on Each Port



3 Years Warranty



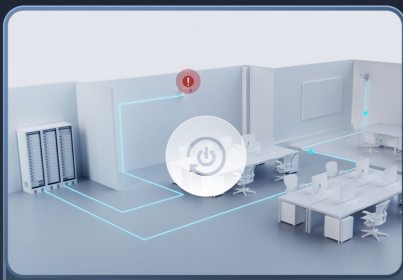
Energy Saving

Unmanaged Switch, Which Is Visible on Ruijie Cloud*

*If an unmanaged switch needs to be visualized on Ruijie Cloud, at least one managed switch needs to be deployed on the same network



Intelligent and Secure CCTV Network



Watchdog



Extend Mode



Port Isolation



PoE Auto Recovery



250 Meters Transmission



Flexible Extend mode



Higher security

Highlight Features

Intelligent PoE Management

Fit for various powered devices up to 30W

Wall AP
802.3af

IP Camera
802.3af

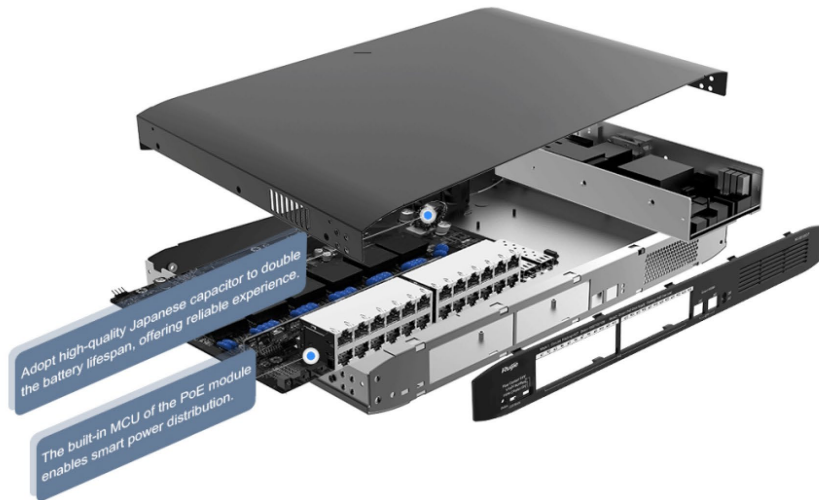
Ceiling AP
802.3at

IP PTZ Camera
802.3at

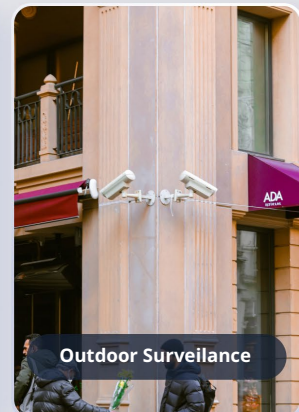


Better Quality Design

Strict standards in PCB design and component selection



Designed for Various Scenarios



Specifications

Specifications	RG-ES05F	RG-ES08F	RG-ES05G-L	RG-ES08G-L	RG-ES116G-L	RG-ES124G-L	RG-ES106F-P
Basic							
Total Number of RJ45 Ports	5	8	5	8	16	24	6
Number of 10/100BASE-T Ports	5	8	N/A	N/A	N/A	N/A	6
Number of 10/100/1000BASE-T Ports	N/A	N/A	5	8	16	24	N/A
Number of PoE/PoE+ Ports	N/A	N/A	N/A	N/A	No	No	4
Max. PoE Power Budget	N/A	N/A	N/A	N/A	No	No	54W
PoE Power Pins	N/A	N/A	N/A	N/A	No	No	1 2+, 3 6-
Extend Mode (Long-Range Transmission)	N/A	N/A	N/A	N/A	No	No	Yes
Layer	L2	L2	L2	L2	L2	L2	L2
Switching Capacity	1Gbps	1.6Gbps	10Gbps	16Gbps	32Gbps	48Gbps	1.2Gbps
Forwarding Rate	0.744Mpps	1.19Mpps	7.44Mpps	11.9Mpps	23.8Mpps	35.7Mpps	0.89Mpps
Buffer Size	768Kbits	768Kbits	1Mbits	1.5Mbits	4.1Mbits	4.1Mbits	768Kbits
Flash Memory	N/A	N/A	1MB	1MB	4MB	4MB	2MB
MAC Address Table Size	N/A	N/A	N/A	N/A	8K	8K	2K
Dimensions (W x D x H)	85*52*23.5m	124*60*24m	85*52*23.5m	124*60*24m	280*125*43.6mm	280*125*43.6mm	166*132.6*43mm
Net Weight	49.5g	82g	57g	104g	1.049kg	1.120kg	0.65kg
Mean Time Between Failure (MTBF)	>200K	>200K	>200K	>200K	>200K	>200K	>200K
Safety Compliance	EN 62638-1	EN 62638-1	EN 62638-1	EN 62638-1	EN 62638-1	EN 62638-1	EN 62638-1
Warranty	3	3	3	3	3	3	3

Specifications

Specifications	RG-ES110F-P	RG-ES110FG-P	RG-ES110GS-P-L	RG-ES118FGS-LP	RG-ES118GS-P-L	RG-ES126FGS-P	RG-ES126FGS-LP
Basic							
Total Number of RJ45 Ports	10	10	9	18	16	26	26
Total Number of Optical Ports	N/A	N/A	1	2	2	1	1
Number of Combo Ports	N/A	N/A	N/A	2	N/A	1	1
Number of 1 Gbps Optical Ports (SFP)	N/A	N/A	1	2	2	1	1
Number of 10/100BASE-T Ports	10	8	N/A	16	N/A	24	24
Number of 10/100/1000BASE-T Ports	N/A	2	9	2	18	2	2
Number of PoE/PoE+ Ports	8	8	8	16	16	24	24
Max. PoE Power Budget	110W	110W	120W	120W	247W	370W	180W
PoE Power Pins	1 2+, 3 6-	1 2+, 3 6-	1 2+, 3 6-	1 2+, 3 6-	1 2+, 3 6-	1 2+, 3 6-	1 2+, 3 6-
Extend Mode (Long-Range Transmission)	Yes	Yes	Yes	Yes	Yes	Yes	Yes
Layer	L2	L2	L2	L2	L2	L2	L2
Switching Capacity	2.0Gbps	5.6Gbps	20Gbps	7.2Gbps	36Gbps	8.8Gbps	8.8Gbps
Forwarding Rate	1.48Mpps	4.17Mpps	14.8Mpps	5.35Mpps	26.8Mpps	6.55Mpps	6.55Mpps
Buffer Size	4Mbits	4Mbits	1.5Mbits	4Mbits	4.1Mbits	4Mbits	4Mbits
Flash Memory	2MB	2MB	2MB	4MB	4MB	4MB	4MB
MAC Address Table Size	8K	8K	4K	8K	8K	8K	8K
Dimensions (W x D x H)	166*132.6*43 mm	166*132.6*43 mm	190*150*43 mm	440mm*214.9mm*44mm	440mm*214.9mm*44mm	440mm*214.9mm*44mm	440mm*214.9mm*44mm
Net Weight	0.97kg	0.97kg	0.97kg	2.46kg	2.57kg	2.62kg	2.64kg

Specifications	RG-ES110F-P	RG-ES110FG-P	RG-ES110GS-P-L	RG-ES118FGS-LP	RG-ES118GS-P-L	RG-ES126FGS-P	RG-ES126FGS-LP
Mean Time Between Failure (MTBF)	>200K	>200K	>200K	>200K	>200K	>200K	>200K
Safety Compliance	EN 62638-1	EN 62638-1	EN 62638-1	EN 62638-1	EN 62638-1	EN 62638-1	EN 62638-1
Warranty	3	3	3	3	3	3	3
Layer2 features							
Jumbo Frame Length (MTU)	2048 Bytes	2048 Bytes	9216 Bytes	2048 Bytes	10000 Bytes	2048 Bytes	2048 Bytes
Flow Control	Yes	Yes	Yes	Yes	Yes	Yes	Yes
Port Isolation / Protected Port	Yes	Yes	Yes	Yes	Yes	Yes	Yes
PoE Watchdog	Yes	Yes	Yes	Yes	Yes	Yes	Yes
Hardware Specifications							
DIP Switch	Extend mode: The rate of Ports 1 to 8 is reduced to 10 Mbps, but the maximum transmission distance can be up to 200 meters (Cate5e cables required).Flow Control On Default mode: All ports can communicate with each other.Flow Control On Isolation mode: Ports 1 to 8 cannot communicate with each	Extend mode: The rate of Ports 1 to 8 is reduced to 10 Mbps, but the maximum transmission distance can be up to 200 meters (Cate5e cables required).Flow Control On Default mode: All ports can communicate with each other.Flow Control On Isolation mode: Ports 1 to 8 cannot communicate with each	Extend mode: The rate of Ports 1 to 8 is reduced to 10 Mbps, but the maximum transmission distance can be up to 200 meters (Cate5e cables required).Flow Control On Default mode: All ports can communicate with each other.Flow Control On Isolation mode: Ports 1 to 8 cannot communicate with each other, but	Extend mode: The rate of Ports 1 to 8 is reduced to 10 Mbps, but the maximum transmission distance can be up to 200 meters (Cate5e cables required).Flow Control On Default mode: All ports can communicate with each other.Flow Control On Isolation mode: Ports 1 to 16 cannot communicate with each other, but	Extend mode: The rate of Ports 1 to 8 is reduced to 10 Mbps, but the maximum transmission distance can be up to 200 meters (Cate5e cables required).Flow Control On Default mode: All ports can communicate with each other.Flow Control On Isolation mode: Ports 1 to 16 cannot communicate with each other, but	Extend mode: The rate of Ports 1 to 8 is reduced to 10 Mbps, but the maximum transmission distance can be up to 200 meters (Cate5e cables required).Flow Control On Default mode: All ports can communicate with each other.Flow Control On Isolation mode: Ports 1 to 24 cannot communicate with each other, but	Extend mode: The rate of Ports 1 to 8 is reduced to 10 Mbps, but the maximum transmission distance can be up to 200 meters (Cate5e cables required).Flow Control On Default mode: All ports can communicate with each other.Flow Control On Isolation mode: Ports 1 to 24 cannot communicate with each other, but

Ruijie | RYCE

 **Redefine your easy network**

Copyright ©2000-2024 Ruijie Networks Co., Ltd. All rights reserved.

No part of this document may be reproduced or transmitted in any form or any means without prior written consent of Ruijie Networks Co., Ltd.

Notice

This content is applicable only to regions outside the China mainland. Ruijie Networks Co., Ltd. reserves the right to interpret this content.

The information contained herein is subject to change without notice. Nothing herein should be construed as constituting an additional warranty. Ruijie Networks Co., Ltd. shall not be liable for technical or editorial errors or omissions contained herein.



Ruijie Networks Co., Ltd.

Official Website: <https://www.ruijie.com>