

# SpeedFace-V5L Series

ZKTeco

Face & Palm Verification and Body Temperature Detection Terminal



SpeedFace-V5L



Face



SpeedFace-V5L[P]



Palm



Face



SpeedFace-V5L[TD]



Palm



Face



Temperature and Mask Detection

Compatible with  
**ZKBio Access**

**SpeedFace-V5L Series** is a fully upgraded version of the SpeedFace-V5L Visible Light Facial Recognition Terminal, using intelligent engineering facial recognition algorithms and the latest computer vision technology. It supports both facial and palm verification with large capacity and speedy recognition, as well as improves security performance in all aspects.

The Series adopts touchless recognition technology and new functions namely temperature detection and masked individual identification which eliminates hygiene concerns effectively. It is also equipped with ultimate antispoofing algorithm for facial recognition against almost all types of fake photos and videos attack. Importantly, the 3-in-1 palm recognition (Palm Shape, Palm Print and Palm Vein) is performed in 0.35 sec per hand; the palm data acquired will be compared with a maximum of 3,000 palm templates.

The terminal with temperature and mask detection will be a perfect choice to help reduce the spread of germs and help prevent infections straightly at each access point of any premises and public areas such as hospitals, factories, schools, commercial buildings, stations during the recent global public health issue with its fast and accurate body temperature measurement and masked individual identification functions during facial and palm verification.

## Features

- Visible Light Facial Recognition
- Better hygiene with touchless biometric authentication, temperature detection and masked individual identification
- Anti-spoofing algorithm against print attack (laser, color and B/W photos), videos attack and 3D mask attack
- Card module with SpeedFace-V5L / SpeedFace-V5L[P]: 12.5 KHz EM card / 13.56MHz IC card (MF)
- Multiple Verification Methods: Face / Palm / Fingerprint / Card / Password

## Special Functions

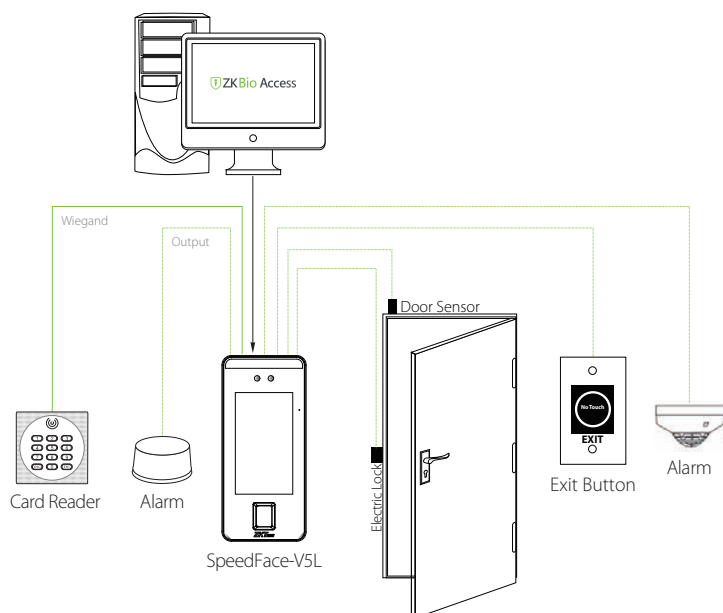
- Mask detection
- Body temperature detection (SpeedFace-V5L[TD] only)
- Temperature Measurement Distance: 30 ~ 50cm (1~ 1.64ft)
- Temperature Measurement Accuracy:  $\pm 0.3^{\circ}\text{C}$  -  $0.5^{\circ}\text{C}$
- Temperature Measurement Range:  $34 \sim 45^{\circ}\text{C}$  ( $93.2 \sim 113^{\circ}\text{F}$ )

\* Facial verification for masked individuals will increase FAR. Palm verification for masked individuals is recommended. Temperature measurement data is for reference only, not for medical use.

## Specifications

	SpeedFace-V5L	SpeedFace-V5L[P]	SpeedFace-V5L[TD]
Display	5-inch Touch Screen		
Face Capacity	6,000		
Palm Capacity	/	3,000	
Fingerprint Capacity	6,000 (Standard); 10,000 (Optional)		
Card Capacity	10,000	/	
Transactions	200,000		
Operation System	Linux		
Standard Functions	ID Card, ADMS, T9 Input, DST, Camera, 9-digit User ID, Access Levels, Groups, Holidays, Anti- passback, Record Query, Tamper Switch Alarm, Multiple Verify Modes.	Except for ID Card, else functions is the same as the left.	
Hardware	900MHz Dual Core CPU, Memory 512MB RAM / 8G Flash, 2MP WDR Low Light Camera, Adjustable the whole word move to next line please Light Brightness LED		
Communication	TCP/IP, WiFi (Optional), Wiegand input / output, RS485		
Access Control Interface	3rd Party Electric Lock, Door Sensor, Exit Button, Alarm output, Auxiliary Input		
Optional Function	13.56MHz IC Card (MF)	/	
Facial Recognition Speed	≤1s		
Biometrics Algorithms	ZKFace V5.8 & ZKFinger V10.0 & ZKPalm V12.0		
Power Supply	12V 3A		
Operating Humidity	10% - 90%		
Operating Temperature	-10°C ~ 45°C (14°F ~ 113°F)		
Dimensions (W*H*D)	91.93 * 202.93 * 21.5 (mm)	91.93 * 220 * 22.5 (mm)	
Supported Softwares	ZKBioAccess		

## Configuration



## Dimensions (mm)

