

Network Video Recorder

NVR508-E-R Series



Features

- Support Ultra 265/H.265/H.264 video formats
- 32/64/128-channel input
- Support mainstream cameras of ONVIF conformance(Profile S, Profile G, Profile T) and RTSP protocols
- Support 2 HDMI and 2 VGA. VGA1 and HDMI1 simultaneous output, VGA2 and HDMI2 simultaneous output. VGA1/HDMI1 and VGA2/HDMI2 independent output
- Up to 32 Megapixels resolution recording
- 8 SATA HDDs, up to 16TB for each HDD
- Support N+1 Hot spare
- Support HDD hot swap with RAID 0, 1, 5, 6, 10 storage scheme configurable
- Redundant power supply optional
- ANR technology to enhance the storage reliability when the network is disconnected
- Support cloud upgrade

Specifications

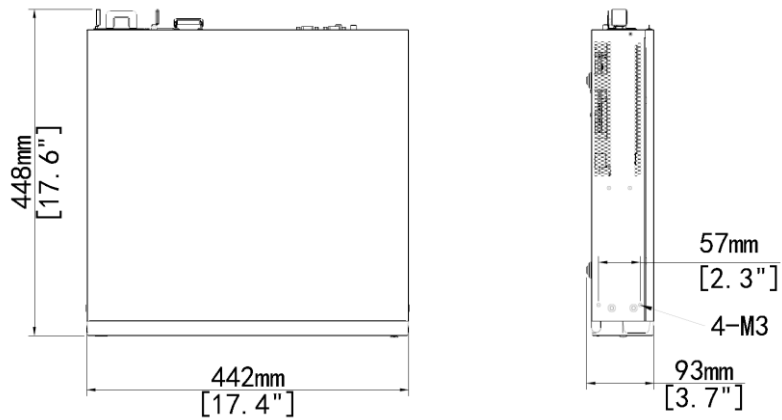
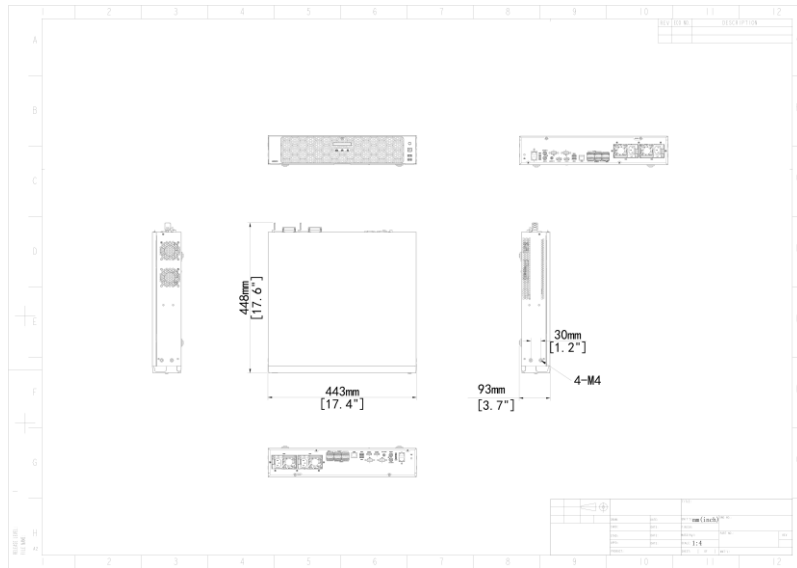
Decoding	Description
Decoding Format	Ultra 265,H.265,H.264
Decoding Capability	NVR508-32E-

	<p>R:2 x 32MP@30, 4 x 16MP@30, 5 x 12MP@30, 8 x 4K@30, 16 x 4MP@30, 32 x 1080P@30</p> <p>NVR508-64E- R:2 x 32MP@30, 4 x 16MP@30, 5 x 12MP@30, 8 x 4K@30, 16 x 4MP@30, 32 x 1080P@30, 54 x 960P@25, 64 x 720P@30</p> <p>NVR508-128E- R:2 x 32MP@30, 4 x 16MP@30, 5 x 12MP@30, 8 x 4K@30, 10 x 6MP@30, 12 x 5MP@30, 16 x 4MP@30, 20 x 3MP@30, 32 x 1080P@30, 54 x 960P@25, 72 x 720P@30, 128 x D1</p>
Audio Compression	G.711A,G.711U
Network	Description
Incoming Bandwidth	384Mbps
Outgoing Bandwidth	384Mbps
Remote Users	128
Protocols	<p>NVR508-32E-R/NVR508-64E- R:TCP/IP,P2P,UPnP,NTP,DHCP,PPPoE,HTTP,HTTPS,DNS,DDNS,SNMP,SMTP,NFS,RTSP,802.1x,IPV6</p> <p>NVR508-128E- R:TCP/IP&P2P&UPnP&NTP&DHCP&PPPoE&HTTP&HTTPS&DNS&DDNS&SNMP&SMTP&NFS&RTSP&802.1x&IPV6</p>
Browser(Plugin)	<p>NVR508-32E-R/NVR508-64E- R:IE(IE10/11)for Windows,Firefox(version 52.0 and above)for Windows,Chrome(version 45 and above)for Windows,Edge(version 79 and above)for Windows</p> <p>NVR508-128E- R:Windows:IE(IE10/11),Firefox (version 52.0 and above),Chrome(version 45 and above), Edge(version 79 and above)</p>
Video/Audio Input	Description
RCA Audio Input	1-ch
Video/Audio Output	Description
HDMI Output	<p>NVR508-32E-R/NVR508-64E- R:HDMI1,HDMI2:4K(3840x2160)/60Hz,4K(3840x2160)/30Hz,1920x1080/60Hz,1920x1080/50Hz,1600x1200/60Hz,1280x1024/60Hz,1280x720/60Hz,1024x768/60Hz</p> <p>NVR508-128E- R:HDMI1, HDMI2:4K(3840x2160)/60Hz,4K(3840x2160)/30Hz, 1920x1080/60Hz, 1920x1080/50Hz, 1600x1200/60Hz, 1280x1024/60Hz, 1280x720/60Hz, 1024x768/60Hz</p>
VGA Output	<p>NVR508-32E-R/NVR508-64E- R:VGA1,VGA2:1920x1080/60Hz,1920x1080/50Hz,1600x1200/60Hz,1280x1024/60Hz,1280x720/60Hz,1024x768/60Hz</p> <p>NVR508-128E- R:VGA1, VGA2:1920x1080/60Hz, 1920x1080/50Hz, 1600x1200/60Hz, 1280x1024/60Hz, 1280x720/60Hz, 1024x768/60Hz</p>
RCA Audio Output	2-ch
Liveview Display	<p>NVR508-32E-R:1/4/6/8/9/16/25/32</p> <p>NVR508-64E-R: HDMI1/VGA1:1/4/6/8/9/16/25/36/64,HDMI2/VGA2:1/4/6/8/9/16/25/36</p> <p>NVR508-128E-R: HDMI1/VGA1:1/4/6/8/9/16/25/36/64, HDMI2/VGA2:1/4/6/8/9/16/25/36</p>
Corridor Mode Screen	3/4/5/7/9/10/12/16/32
Two-way Audio	Description
Two-way Audio	1-ch,RCA(Using the audio input and output)

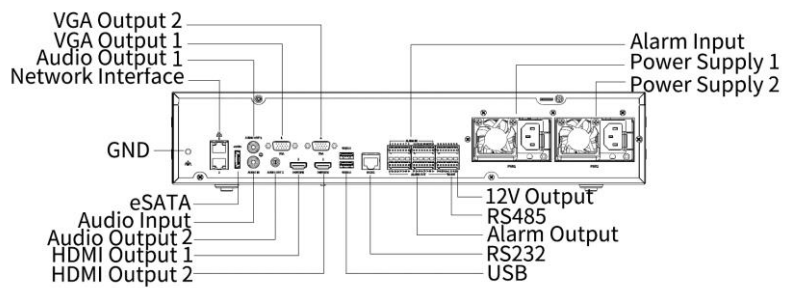
Snapshot	Description
FTP/Schedule/Event Snapshot	16-ch snapshot, up to 1080P resolution
Recording	Description
Recording Resolution	32MP/16MP/12MP/8MP/6MP/5MP/4MP/3MP/1080P/960P/720P/D1/2CIF/CIF
Synchronous Playback in Local	16-ch
Smart	Description
VCA Detection by IPC	<p>NVR508-32E-R/NVR508-64E- R:Face Detection,Face Comparison,Vehicle Detection,SIP(Intrusion Detection,Cross Line Detection,Enter Area,Leave Area),Ultra Motion Detection(UMD),Temperature Detection(Fire Detection,Smoking Detection,Temperature Measurement,Smoke and Fire Detection),People Counting(People Flow Counting,Crowd Density Monitoring),Video Metadata,Traffic Monitoring</p> <p>NVR508-128E- R:Face Detection&Face Comparison&Vehicle Detection&SIP(Intrusion Detection,Cross Line Detection,Enter Area,Leave Area)&Ultra Motion Detection(UMD)&Temperature Detection(Fire Detection,Smoking Detection,Temperature Measurement,Smoke and Fire Detection)&People Counting(People Flow Counting,Crowd Density Monitoring)&Video Metadata &Traffic Monitoring</p>
VCA Search	<p>NVR508-32E-R/NVR508-64E- R:Face Snapshot Search,Face Comparison Search,Motor Vehicle Search,Non-Motor Vehicle Search,Human Body Search,General Search,People Counting Report,Heat Map</p> <p>NVR508-128E- R:Face Snapshot Search&Face Comparison Search&Motor Vehicle Search&Non-Motor Vehicle Search&Human Body Search&General Search&People Counting Report&Heat Map</p>
Smart by IPC	Total 16-ch(Face Detection,Face Comparison,Vehicle Detection,Temperature Detection,SIP,UMD,Video Metadata,Traffic Monitoring)
Face Picture Library	Up to 128 face picture libraries,with up to 500,000 face pictures in total
Vehicle Picture Library	Up to 5 vehicle picture libraries,with up to 25,000 vehicle pictures in total
Alarm	Description
General Alarm	<p>NVR508-32E-R/NVR508-64E- R:Defocus Detection,Scene Change Detection,Object Left Behind,Object Removed,Auto Tracking,Motion Detection,Tampering,Human Body Detection,Video Loss Alarm Input,Audio Detection</p> <p>NVR508-128E- R:Defocus Detection&Scene Change Detection&Object Left Behind&Object Removed&Auto Tracking&Motion Detection&Tampering&Human Body Detection&Video Loss Alarm Input&Audio Detection</p>
Alert Alarm	<p>NVR508-32E-R/NVR508-64E- R:IP Conflict,Network Disconnected,Disk Offline,Disk Abnormal,Illegal Access,Hard Disk Space Low,Hard Disk Full,Recording/Snapshot Abnormal</p> <p>NVR508-128E- R:IP Conflict&Network Disconnected&Disk Offline&Disk Abnormal&Illegal Access&Hard Disk Space Low&Hard Disk Full&Recording/Snapshot Abnormal</p>
Hard Disk	Description
SATA	8 SATA Interfaces
Capacity	Up to 16TB for each disk
Disk Group	Support

Disk Array Type	RAID 0,1,5,6,10
External Interface	Description
Network Interface	2 RJ45 10M/100M/1000M self-adaptive Ethernet Interface
USB	NVR508-32E-R/NVR508-64E-R:Front panel: 2 x USB2.0,Rear panel: 2 x USB3.0 NVR508-128E-R:Front panel: 2 x USB2.0&Rear panel: 2 x USB3.0
RS485	1
RS232	1
Alarm In	16-ch
Alarm Out	10-ch
eSATA	1
Power Output	12V
Power Supply	NVR508-32E-R/NVR508-64E-R:AC 100~240V Power Consumption: ≤ 50W (without HDD) NVR508-128E-R:AC 100~240V
Working Environment	Description
Working Temperature	-10° C ~ +55° C (+14° F ~ +131° F)
Working Humidity	≤ 90% RH (non-condensing)
Power Consumption (without HDD)	≤ 50W
Dimensions	Description
Weight (without HDD)	≤ 6Kg (13.23lb)
Dimensions	442mm × 448mm × 93mm (17.4" × 17.6" × 3.7")
Certification	Description
Certification	CE,FCC,UL,RoHS,WEEE
CE	EN 55032,EN 61000-3-3,EN IEC 61000-3-2,EN 55035
FCC	Part15 Subpart B

Dimensions



Rear Panel



Zhejiang Uniview Technologies Co., Ltd.

No. 369, Xietong Road, Xixing Sub-district, Binjiang District, Hangzhou City, 310051, Zhejiang Province, China

Email: overseasbusiness@uniview.com; globalsupport@uniview.com

<http://www.uniview.com>

©2023 Zhejiang Uniview Technologies Co., Ltd. All rights reserved.

*Product specifications and availability are subject to change without notice.