

RG-RAP2266

Reyee Wi-Fi 6 AX3000 Indoor Ceiling-Mount Access Point

DATASHEET



Highlights

- Dual-Band performance, gigabit wireless Ceiling-mounted AP
- Capable of Reyee Mesh and 802.11K/V/R
- Easy installation, rotating and done
- New circular aesthetics, more in line with the hotel decoration style
- Powerful Standalone Portal via Ruijie Cloud

Highlight Features

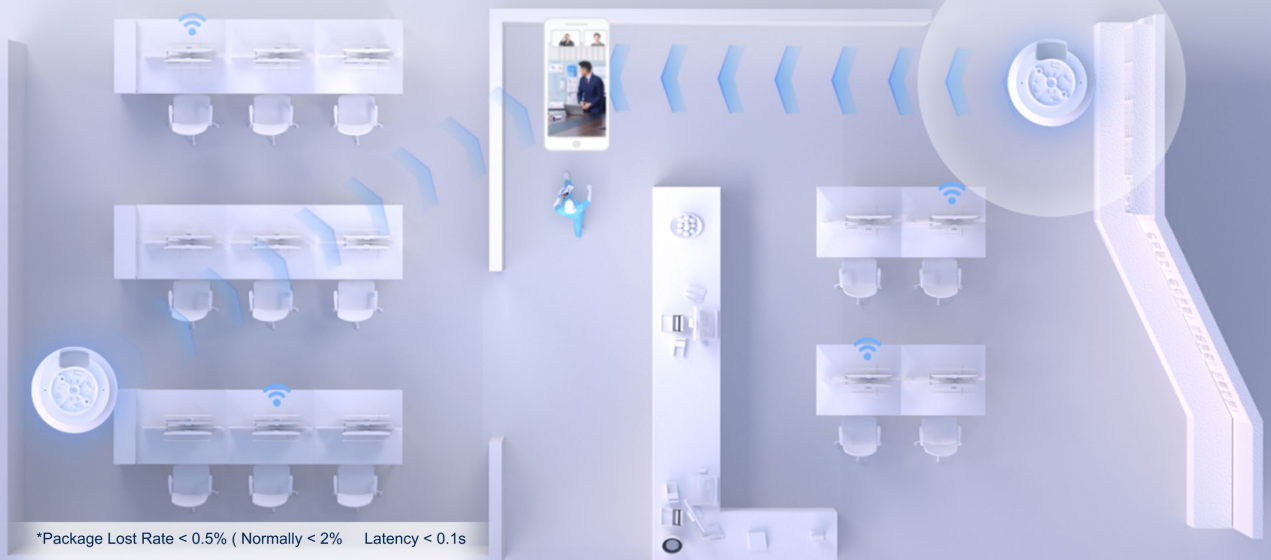
Wi-Fi AX3000 Dual-band Round Ceiling AP

RG-RAP2266



Seamless Roaming, Ever Smart Like This

Smart AI Roaming, Based on Cloud Algorithm and Technology of 802.11k/v/r, Guaranteed Smooth and Lag-Free Internet



Installation With Rotating, Quick and Easy



Highlight Features

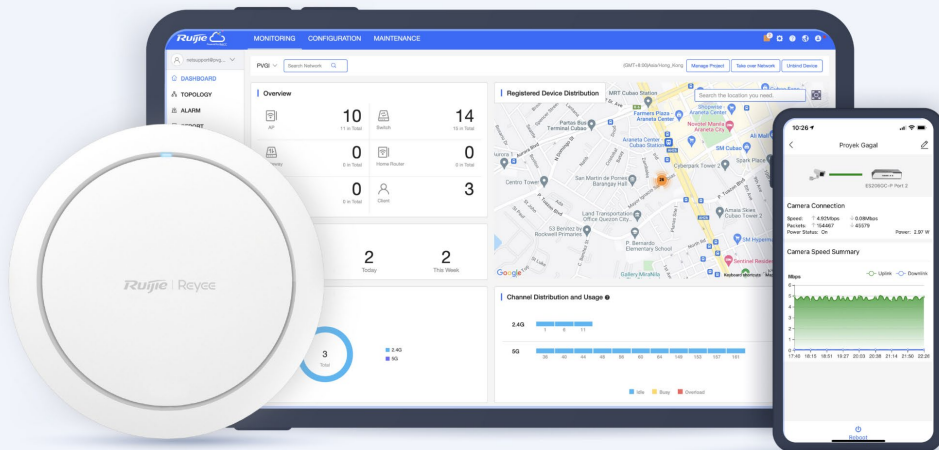
Easily Install Extra AP with Reye Mesh

Less wiring, more relaxing



Cloud, Make Your Business Easy

- Self-organizing network
- Cloud portal authentication
- Remote monitoring and maintenance
- Upgrade firmware via Cloud
- APP library dynamically update



Specifications

Basic Features

| | |
|------------------|--|
| Wi-Fi Standards | Wi-Fi6 (IEEE 802.11ax) Wi-Fi5 (IEEE 802.11ac Wave 2) Wi-Fi4(IEEE 802.11n) IEEE 802.11a IEEE 802.11b/g |
| MIMO | 2.4GHz, 2x2 ,MU-MIMO 5GHz, 2x2 ,MU-MIMO |
| Max. Wi-Fi Speed | 2.4GHz: 574Mbps 5GHz: 2402Mbps |
| Antenna | 5 |
| Antenna Type | Built-In Omnidirectional |
| Antenna Gain | 2.4 GHz:3.53dBi 5 GHz:5.15dBi Note The peak gain mentioned above refers to the gain of a single antenna. |
| Transmit Power | Frequency bands using and the max EIRP: Note: Country specific restrictions apply European Union & United Kingdom 2400-2483.5 MHz, EIRP ≤ 20 dBm 5150-5350 MHz, EIRP ≤ 23 dBm 5470-5725 MHz, EIRP ≤ 30 dBm United States: 2400-2483.5 MHz, max output power ≤ 30dBm & EIRP ≤ 36 dBm 5150-5250 MHz, max output power ≤ 30dBm & EIRP ≤ 36 dBm 5250-5350 MHz, max output power < 24dBm & EIRP ≤ 30 dBm 5470-5725 MHz, max output power < 24dBm & EIRP ≤ 30 dBm 5725-5825 MHz, max output power ≤ 30dBm & EIRP ≤ 36 dBm Myanmar : 2400-2483.5 MHz, EIRP ≤ 23 dBm 5725-5825 MHz, EIRP ≤ 30 dBm Thailand: 2400-2483.5 MHz, EIRP ≤ 20 dBm 5150-5350 MHz, EIRP ≤ 23 dBm 5470-5725 MHz, EIRP ≤ 30 dBm 5725-5825 MHz, EIRP ≤ 30 dBm Indonesia: 2400-2483.5 MHz, EIRP ≤ 27 dBm 5150-5350 MHz, EIRP ≤ 23 dBm 5725-5825 MHz, EIRP ≤ 23 dBm Egypt: 2400-2483.5 MHz, EIRP ≤ 20 dBm 5150-5350 MHz, EIRP ≤ 23 dBm |

Specifications

Basic Features

| | |
|-----------------------------------|---|
| Fixed Ports | 1×10/100/1000 Base-T port 1×DC port 1×Reset button |
| Max. Clients | 512 |
| Recommended Clients | 110 |
| Max. SSIDs | 8 |
| Recommended Wi-Fi Coverage Radius | 2.4GHz: 40 meters 5GHz: 70 meters The Wi-Fi coverage is related to the installation environment of the access point. |
| Max. Wi-Fi Coverage Radius | 150 meters |
| Operation Frequency Bands | 802.11b/g/n/ax: 2.400 GHz to 2.4835 GHz 802.11a/n/ac/ax: 5.150 GHz to 5.350 GHz, 5.470 GHz to 5.725 GHz , 5.725 GHz to 5.850 GHz country-specific restrictions apply |

Software Features

WLAN Basic Features

| | |
|--|---|
| Power Adjustment | ✓ |
| Frequency Bandwidth | 2.4 GHz: Auto/20/40 MHz 5 GHz: Auto/20/40/80/160 MHz |
| Roaming | Layer 2 roaming Layer 3 roaming 802.11k/v/r |
| OFDMA | ✓ |
| Beamforming | ✓ |
| Target wake time (TWT)* | Not Support |
| WMM | ✓ |
| Radar Signal Detection and Frequency Hopping (DFS) | ✓ |
| WLAN Security | |
| Wi-Fi Password | 16 bits |

Specifications

Software Features

Security Mode WPA-PSK, WPA2-PSK, WPA/WPA2-PSK;

Blacklist and Whitelist ✓

Prevent Fragmentation Attack Not Support

Prevent ICMP Attack Not Support

Enhanced User Experience

Wi-Fi Optimization ✓

STA Limit ✓

Removing Low-RSSI STAs ✓

Adjusting Sending Rate of Beacon and Probe Response ✓

Syslog Recording Why Users Lose Connection ✓

Auto Channel and Power Adjustment on Cloud ✓

RSSI Threshold for STA Access ✓

Load Balancing ✓

Networks

Network Access Mode PPPoE Client
DHCP Client
Static IP

Avoidance of WAN IP Address Conflicts Not Support

VLAN ✓

DHCP Server ✓

System

Cloud Management ✓

APP Management ✓

Specifications

Hardware Features

| | |
|-------------------------|--|
| APP Upgrade | ✓ |
| APP Restart | ✓ |
| Scheduled Restart | ✓ |
| Default Access/Password | 10.44.77.254 The factory status password: admin |
| Local Upgrade | ✓ |
| Online Upgrade | ✓ |
| Backup | ✓ |
| Factory Reset | ✓ |
| Language | Chinese English |
| System Log | ✓ |
| Diagnostics | ✓ |
| Network Check | ✓ |

Physical

| | |
|---|---|
| LED Indicator | 1× system LED indicator |
| Buttons | 1×Reset button |
| Dimensions (W × D × H) | 220 mm x 220 mm x 52.6 mm (8.66 in. x 8.66 in. x 2.07 in., without the mounting bracket) |
| Weight | ≤ 0.5 kg (Without Mounting Bracket) |
| DC Port Dimensions | Outer Diameter: 6.3 mm Inner Diameter: 2.0 mm Length: 9.8 mm |
| Installation | Ceiling-Mountable |
| Mounting Bracket Dimensions (W × D × H) | 113.5 mm x 113.5 mm x 13.5 mm |
| Mounting Hole Pattern | 80 mm |

Specifications

Environment

| | |
|------------------------|-------------------------------|
| Mounting Hole Diameter | 6.5 mm |
| Pole Diameter | NA |
| Power Supplies | IEEE 802.3at PoE DC 12V/2A |
| Power Consumption | ≤ 18W |
| PoE Power Budget | NA |
| Operating Temperature | 0°C to 40°C |
| Storage Temperature | -40°C to 70°C |
| Operating Humidity | 5% to 95% Noncondensing |
| Storage Humidity | 5% to 95% Noncondensing |
| IP(Ingress Protection) | NA |
| Port Surge | +/-2kV |
| MTBF | >400000H |

Ruijie | Rcycc

 **Redefine your easy network**

Copyright ©2000-2023 Ruijie Networks Co., Ltd. All rights reserved.

No part of this document may be reproduced or transmitted in any form or any means without prior written consent of Ruijie Networks Co., Ltd.

Notice

This content is applicable only to regions outside the China mainland. Ruijie Networks Co., Ltd. reserves the right to interpret this content.

The information contained herein is subject to change without notice. Nothing herein should be construed as constituting an additional warranty. Ruijie Networks Co., Ltd. shall not be liable for technical or editorial errors or omissions contained herein.



Ruijie Networks Co., Ltd.
Building 19, Juyuanzhou Industrial Park, No.618 Jinshan
Road, Cangshan District, Fuzhou, Fujian, China
Website: <https://www.ruijienetworks.com>