

DH-IPC-HFW5241T-AS-PV

2MP WDR IR Bullet WizMind Network Camera



WizMind

Launched by Dahua Technology, Dahua WizMind is a full portfolio of solutions composed of project-oriented products including IPC, NVR, PTZ, XVR, Thermal and software platform which adopts industry-leading deep learning algorithms. Focusing on customer's requirements, WizMind provides precise, reliable and comprehensive AI solutions for verticals.

Series Overview

With starlight solution and deep learning algorithm, Dahua WizMind 5 Series network camera has various intelligent functions, including face capture, perimeter protection and people counting, which greatly improve the accuracy of video analysis. The series camera supports dust-proof function, waterproof function and vandal-proof function, complying with the standards of IP67 and IK10 (Supported by some select models).

Functions

Perimeter Protection

With deep learning algorithm, Dahua Perimeter Protection technology can recognize human and vehicle accurately. In restricted area (such as pedestrian area and vehicle area), the false alarms of intelligent detection based on target type (such as tripwire, intrusion, fast moving, parking detection, loitering detection and gathering detection) are largely reduced.

People Counting

With deep learning algorithm, Dahua People Counting technology can track and process moving human body targets to realize the accurate statistics of enter No., leave No., and In Area No. Working with management platform, it outputs yearly/monthly/daily reports to meet your requirements.

- 1/2.8" 2Megapixel progressive scan STARVIS™ CMOS
- ROI, SMART H.264+/H.265+, flexible coding, applicable to various bandwidth and storage environments
- 25/30 fps@1080P (1920 × 1080)
- WDR (120 dB), Day/Night (ICR), 3D DNR, AWB, AGC, BLC
- Multiple network monitoring: Web viewer, CMS (DSS/PSS) & DMSS
- 2.8 mm fixed lens (3.6 mm, 6.0 mm, 8.0 mm optional)
- 1/1 Alarm in/out, 1/1 audio in/out (Built-in Speaker)
- Max. IR LEDs Length 60 m
- Micro SD memory, IP67



Active Deterrence

Active deterrence is to warn off intruders actively with white light and siren even before users are aware of the incidence. Once an intrusion is detected, the white light will turn on and the siren will buzzer to alert the intruder. The white light can be set to Normally on or Flash, the content of siren is configurable.

Protection (IP67, wide voltage)

IP67: The camera passes a series of strict test on dust and soak. It has dust-proof function, and the enclosure can works normal after soaking in 1 m deep water for 30 minutes.

Wide voltage: The camera allows $\pm 30\%$ (for some power supplies) input voltage tolerance (wide voltage range), and it is widely applied to outdoor environment with instable voltage.

| Technical Specification | | | | | |
|--------------------------------|--|-------------|------------|-----------|-----------|
| Camera | | | | | |
| Image Sensor | 1/2.8" 2Megapixel progressive scan STARVIS™ CMOS | | | | |
| Max. Resolution | 1920 (H) × 1080 (V) | | | | |
| RAM/ROM | 512 MB/128 MB | | | | |
| Scanning System | Progressive | | | | |
| Electronic Shutter Speed | Auto/Manual, 1/3 s–1/100000 s | | | | |
| S/N Ratio | > 56 dB | | | | |
| Minimum Illumination | 0.002 Lux@F1.6 | | | | |
| Illumination Distance | Distance up to 60 m (197 ft) | | | | |
| Illuminator On/Off Control | Auto/Manual | | | | |
| Illuminator Number | 2 IRs, 1 LED | | | | |
| Lens | | | | | |
| Lens Type | Fixed-focal | | | | |
| Mount Type | Board-in | | | | |
| Focal Length | 2.8 mm, 3.6 mm, 6.0 mm, 8.0 mm | | | | |
| Max. Aperture | F1.6 | | | | |
| Angle of View | H: 106°, V: 57°/H: 87°, V: 46°/H: 53°, V: 30°/H: 41°, V: 23° | | | | |
| Aperture Type | Fixed | | | | |
| Close Focus Distance | 0.6 m (1.97 ft)/1.2 m (3.94 ft)/2.5 m (8.20 ft)/4 m (13.12 ft) | | | | |
| DORI Distance | Lens | Detect | Observe | Recognize | Identify |
| | 2.8mm | 39m(128ft) | 15m(49ft) | 8m(26ft) | 4m(13ft) |
| | 3.6mm | 55m(180ft) | 22m(72ft) | 11m(36ft) | 6m(20ft) |
| | 6mm | 83m(272ft) | 33m(108ft) | 17m(56ft) | 8m(26ft) |
| | 8mm | 110m(361ft) | 44m(144ft) | 22m(72ft) | 11m(36ft) |
| Pan/Tilt/Rotation | | | | | |
| Pan/Tilt/Rotation Range | Pan: 0°–360°; Tilt: 0°–90°; Rotation: 0°–360° | | | | |
| Artificial Intelligence | | | | | |
| Perimeter Protection | Tripwire; intrusion; fast moving (the three functions support the classification and accurate detection of vehicle and human); loitering detection; people gathering; parking detection | | | | |
| People Counting | Support the counting of enter number, leave number, and pass number, and displaying and outputting yearly/monthly/daily reports. Support the counting of number in area, and 4 rules configuration. Count number of people or stay time and link alarm. Support queue management, and 4 rules configuration. Count number of people or stay time and link alarm | | | | |
| General Intelligence | | | | | |
| Event Trigger | Motion detection, Video tampering, Scene changing, Network disconnection, IP address conflict, Illegal Access, Storage anomaly | | | | |
| General Intelligence | Object Abandoned/Missing | | | | |
| Heat Map | Yes | | | | |
| Video | | | | | |
| Compression | H.265, H.264, H.264B, H.264H, MJPEG (only supported by sub stream) | | | | |
| Smart Codec | Smart H.265+/ Smart H.264+ | | | | |
| Streaming Capability | 3 Streams | | | | |
| Resolution | 1080P (1920 × 1080)/1.3M (1280 × 960)/720P (1280 × 720)/D1 (704 × 576/704 × 480)/VGA (640 × 480)/CIF (352 × 288/352 × 240) | | | | |
| Frame Rate | Main Stream: 1080P (1 fps–25/30 fps) | | | | |
| | Sub Stream: D1 (1 fps–25/30 fps) | | | | |
| | Third Stream: 1080P (1 fps–6 fps) | | | | |
| Bit Rate Control | CBR/VBR | | | | |
| Bit Rate | H.264: 32 Kbps–8192 Kbps H.265: 19 Kbps–7424 Kbps | | | | |
| Day/Night | Auto(ICR)/Color/B/W | | | | |
| BLC Mode | BLC/HLC/WDR (120 dB) | | | | |
| White Balance | Auto/Natural/Street Lamp/Outdoor/Manual | | | | |
| Gain Control | Auto/Manual | | | | |
| Noise Reduction | 3D DNR | | | | |
| Motion Detection | Off/On (4 Zone, Rectangle) | | | | |
| Region of Interest | Off/On (4 Zone) | | | | |
| Smart Illumination | Yes | | | | |
| Defog | Yes | | | | |
| Flip | 0°/90°/180°/270° | | | | |
| Mirror | Off/On | | | | |
| Privacy Masking | Off/On (4 Area, Rectangle) | | | | |
| Audio | | | | | |
| Audio Compression | G.711a, G.711Mu, G.726, AAC, G.723 | | | | |
| Alarm | | | | | |
| Alarm Event | No SD card;SD card full;SD card error;network disconnection;IP conflict;illegal access;motion detection;video tampering;Defocus Detection;scene changing;intrusion;tripwire;abandoned object;missing object;fast moving;parking detection;loitering detection;people gathering;audio detection;people counting;face detection;People counting in area;Stay alarm;People No. exception detection;Queue Management;White light alarm;Voice alarm (11 Built-in voices, and custom voices are supported) | | | | |
| Network | | | | | |
| Network | RJ-45 (10/100 Base-T) | | | | |
| SDK and API | Yes | | | | |
| Protocol | IPv4;IPv6;HTTP;HTTPS;TCP;UDP;ARP;RTP;RTSP;RTCP;RTMP;SMTP;FTP;SFTP;DHCP;DNS;DDNS;QoS;UPnP;NTP;Multicast;ICMP;IGMP;NFS;PPPoE;802.1x;SNMP | | | | |
| Interoperability | ONVIF (Profile S/Profile G/Profile T), CGI, Milestone, Genetec, P2P | | | | |

| | |
|---------------------|--|
| User/Host | 20 Users |
| Storage | NAS;FTP;SFTP;Dahua Cloud Micro SD card 256 GB |
| Browser | IE (versions newer than IE8), Chrome, Firefox, Safari (versions newer than Safari 12) |
| Management Software | Smart PSS, DSS, DMSS |
| Mobile Phone | iOS, Android |

Certifications

| | |
|----------------|--|
| Certifications | CE-LVD: EN62368-1 CE-EMC: Electromagnetic Compatibility Directive 2014/30/EU FCC: 47 CFR FCC Part 15, Subpart B UL/CUL: UL60950-1 CAN/CSA C22.2 No.60950-1-07 |
|----------------|--|

Interface

| | |
|-----------------|--|
| Audio Interface | 1/1 channel In/Out, Built-in Speaker |
| Alarm | 1 channel In: 5mA 5V DC 1 channel Out: 300mA 12V DC |

Electrical

| | |
|-------------------|------------------------------|
| Power Supply | DC 12V (±30%), PoE (802.3af) |
| Power Consumption | <8.3W |

Environmental

| | |
|----------------------|---|
| Operating Conditions | -40°C to +60°C (-40°F to +140°F)/Less than 95% RH |
| Storage Conditions | -40°C to +60°C (-40°F to +140°F) |
| Protection Grade | IP67 |

Construction

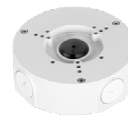
| | |
|--------------|--|
| Casing | Metal |
| Dimensions | 244.1 mm × 79.0 mm × 75.9 mm (9.61" × 3.11" × 2.99") |
| Net Weight | 0.815 kg (1.80 lb) |
| Gross Weight | 1.08 kg (2.38 lb) |

Ordering Information

| Type | Part Number | Description |
|------------------------|------------------------|---|
| 2MP camera | DH-IPC-HFW5241TP-AS-PV | 2MP WDR IR Bullet WizMind Network Camera, WDR, PAL |
| | DH-IPC-HFW5241TN-AS-PV | 2MP WDR IR Bullet WizMind Network Camera, WDR, NTSC |
| | IPC-HFW5241TP-AS-PV | 2MP WDR IR Bullet WizMind Network Camera, WDR, PAL |
| | IPC-HFW5241TN-AS-PV | 2MP WDR IR Bullet WizMind Network Camera, WDR, NTSC |
| Accessories (optional) | PFA130-E | Junction box |
| | PFA152-E | Pole Mount |
| | PFA151 | Corner Mount |

Accessories

Optional:



PFA130-E
Junction box



PFA152-E
Pole Mount



PFA151
Corner Mount

| Junction Mount | Pole Mount | Corner Mount |
|----------------|--------------------|-------------------|
| PFA130-E | PFA130-E+ PFA152-E | PFA130-E + PFA151 |
| | | |

Dimensions (mm[inch])

