

## DOUBLE DISCONNECT BOARD 125A DDU-125A



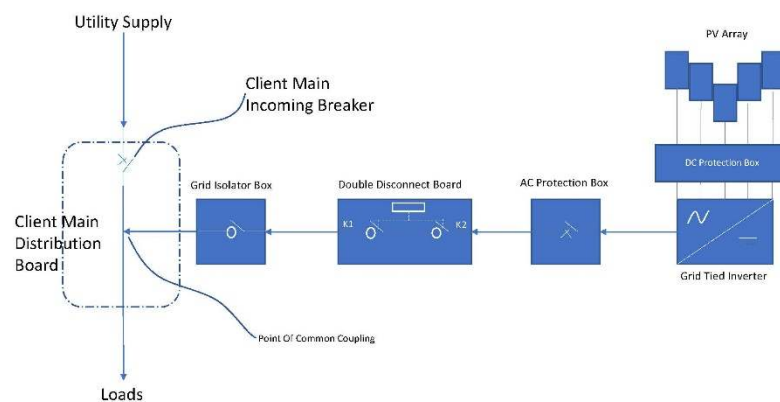
- IP65
- Mild steel
- B26 Orange

- This Double disconnect board is designed for the connection and protection of a PV System with input not exceeding a total of 125A
- Once coupled with the double disconnect control unit the connection between the utility grid and the PV Solar system is monitored by an independent grid monitoring relay and can be configured according to the required Country Grid Code for its intended use. A secure grid disconnection is required by series connection of two independently switched contactors. The switching control is obtained from the Grid Monitoring Relay installed in the control enclosure
- This board is supplied pre-wired with the installer only required to connect the combined output from the PV system, and the Utility side of the installation
- These double disconnect units are delivered with settings already set to suit the South African grid code.
- The enclosure provides excellent protection against the elements.
- Pre-wired internal switchgear improves the system installation time.

## Technical Data

Item Number		DDU-125A
Inverter Connection		3W+N+E
Circuit breaker current rating – Main Output	Non-Adjustable	125A
Number of Inputs		1
Number of Outputs		1
Enclosure material		Mild Steel
Enclosure material thickness		1.6mm
Enclosure Colour		B26 Orange
Mounting	Wall	1 x set of 4 wall brackets
Door opening	Hinge on side	Lever Lock
Internal cover plate	Lexan	Yes
Internal components pre-wired		Yes
Panel AC fault level		10kA
System voltage		400V
IP Rating		IP65
Earth stud		Yes
Dimensions	Height/Width/Depth(mm)	450 x 300 x 220
Disconnect type		Contactors

**NB: All equipment to be installed and operated by qualified personnel only**



**SegenSolar**  
(Pty) Ltd

245Masjien Street  
Strijdom Park, Randburg  
www.segensolar.co.za