

ProMA Series

Outdoor Facial, Fingerprint & RFID Access Control Solution.

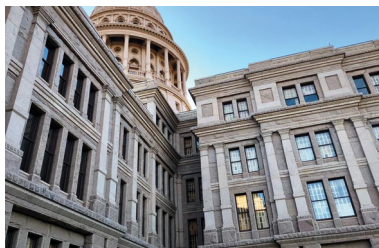
Compatible With



Overview

The ProMA is an advanced outdoor access control terminal designed for harsh environments. It features a robust aluminum casing that is water, dust, and vandal-proof, providing enhanced security with multi-biometric authentication options including face, fingerprint, and RFID recognition. The ProMA offers impressive authentication capacity and speed, making it ideal for a wide range of access control applications. It also supports the ZKTeco PUSH communication protocol and integrates with the latest hybrid biometric technology and computer vision security platform, making it easy to integrate with existing access control systems. The ProMA is a high-end solution that delivers top-notch security, durability, and convenience for a variety of access control applications.

Scenarios



Government and public institutions



Industrial and manufacturing facilities



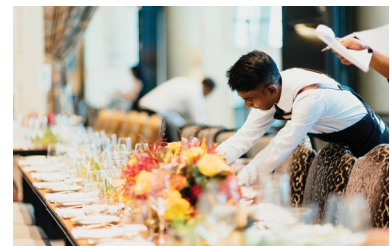
Healthcare and pharmaceuticals



Educational institutions



Transportation and logistics



Hospitality and entertainment

Specifications (G : GL Exclusive Feature)

Capacity

Fingerprint	10,000(Only ProMA)
G Face	30,000(Optional:50,000 only ProMA-QR&ProMA-RF)
G Palm(coming soon)	5,000(Optional)
Cards	50,000(Optional:100,000 only ProMA-QR&ProMA-RF)
Transactions	500,000

Hardware

- G 1.0GHz Quad Core CPU
- G Memory 1G RAM / 8G Flash
- Z-ID Fingerprint Sensor (Available on ProMA only)
- QR code Sensor (Available on ProMA-QR only)
- G 2.0 Inches color TFT Monitor
- Hi-Fi Voice & Indicator Tamper Switch Alarm

Optional Functions

- Palm recognition
- G PoE IEEE 802.3af / at(external)
- HID Proxy / iClass / multi-tech Card module
- G Scramble QR code recognition (Supports: PDF417, Data Matrix, MicroPDF417, Aztec, available on ProMA-QR only)

Communication

- 1* TCP/IP (TLS1.2, AES-256 end to end secured communication channel)
- 1* Wiegand input/Output
- G 1*Standard RS485 / OSDP V2.1.7 over RS485 (AES-128, OSDP V2.1.7 Secured Channel)

Standard Functions

- G On-board Web server function
- Access Levels / Groups / Holidays
- DST / Bell Schedule /14-digit User ID
- Duress Mode /Tamper Switch Alarm, Multiple Anti-Passback
- Record Query

Access Control Interface

- 1* Lock Relay Output
- 1* Alarm Output / Auxiliary Input
- 1* Exit Button / Door Sensor
- 1* Doorbell Output

Compatibility

- Security Relay Box
- Wiegand / OSDP/ RS485 / RS232 Slave Reader with FP / RFID / QR-code
- G Software: ZKBio CVSecurity / ZKBioTalk(coming soon)
- G Mobile App: ZSmart(coming soon)

Special Functions

- G IP66 (water & dust proof)
- G IK07 (vandal proof)
- ≤0.3s High Speed Facial Recognition
- G Fully complied with ZKCSBL (ZKTeco Cyber Security Base Line)
- G Video intercom(coming soon)
- G Onvif Protocol (Compatible with Profile S, Profile T, Profile G, Profile C, Profile Q & Profile A)(coming soon)

Additional Info

- ZKFace v3.9& ZKFinger v10.0
- ZKPalmVein12.0 Algorithms
- G Operating Temperature: -26 °C to 55 °C (-14.80°Fto 131°F)
- Operating Humidity: ≤93%RH
- G Storage Temperature: -30 °C to 65 °C (-22°F to 149°F)
- Storage Humidity: ≤93%RH
- Dimensions(W*H*D): 68.7*194.7*28.3mm
- Heavy duty aluminium alloy casing

RFID Module

- ID:EM05
- IC:IC08
- ID&IC:B133
- ID&IC&HID Prox/HID iclass:MTR30(coming soon)
- BLE/NFC(coming soon)

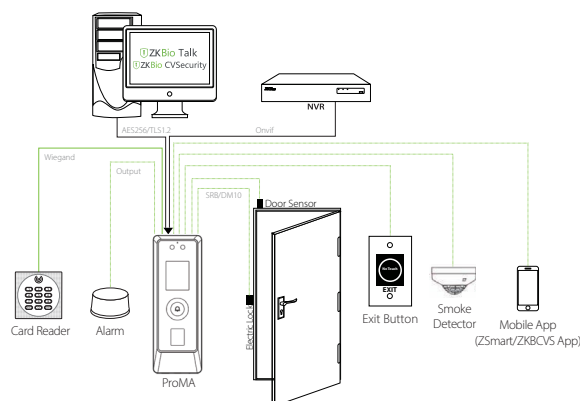
Power

- Operating Voltage: 12V DC
- Current Draw: < 550mA

Technical Feature Overview

- High-strength aluminium alloy casting casing with an IK07 vandal-proof structure and IP66 water and dust resistance.
- Operating temperature ranges from -26°C to 55°C, while storage temperature ranges from -30°C to 65°C, making it suitable for extreme environments.
- Full spectrum of authentication methods, supporting face/fingerprint/RFID card.
- Supports up to 30,000 faces/10,000 fingerprints/50,000 RFID cards/500,000 records. Supports IEEE 802.3af/at standard Power over Ethernet.
- Supports multiple RFID modules and up to 100+ card types (including ID/IC/Legic/Desfire EV1/EV2/HID Prox./HID iClass/etc.).
- HD video door phone via ZSmart mobile App & ZKBioTalk PC App.
- Embedded web server for system configuration
- Fully complied with ZKCSBL (ZKTeco Cyber Security Base Line). Standard to provide advance protection
- Supports Onvif Protocol (Compatible with Profile S, Profile T, Profile G, Profile C, Profile Q & Profile A)(coming soon)
- Compatible with ZKTeco all-in-one security platform ZKBio CVSecurity

Configuration



Dimensions

