

## NDA S-SIGHT SERIES

Provision-ISR S-SIGHT series provides you with all you need for a simple installation. S-Sight cameras guarantee superior image quality, improved night performance and make an outstanding value-for-money solution.



# I4-320IPSN-VF

## 40M IR 2MP VARI-FOCAL LENS BULLET CAMERA

Equipped with a 2.8-12mm Vari-Focal lens, this 2MP bullet camera is designed for medium-distance surveillance (up to 40m) in indoor and outdoor scenarios. With its excellent performance, reliability, and affordable price, the I4-320IPSN-VF camera is the perfect solution for basic installations.



### MAIN FEATURES

- 2MP
- S-SIGHT
- 1920x1080 Resolution
- 2.8-12mm Vari-Focal (93.5°-31.9°)
- 3D-DNR
- IP67

### ANALYTICS

- General Analytics: Camera Tampering
- Standard Analytics: Line Crossing, Sterile Area



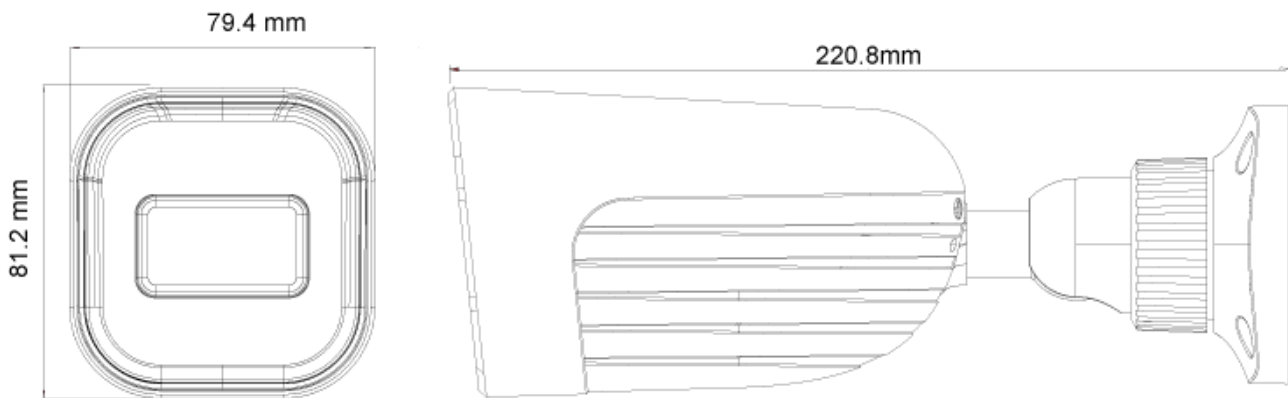
## SPECIFICATIONS

|                      |  |
|----------------------|--|
| Image Sensor         | 1/2.8" CMOS (16:9)   |
| Effective Pixels     | 1920x1080  |
| Electronic Shutter   | 1/25s ~ 1/100000s  |
| Frame Rate           | 1-25/30FPS   |
| Day & Night          | ICR  |
| Min. Illumination    | Day: 0.1lux / Night: 0.013lux (@F2.0, AGC on) 0lux with IR on  |
| Audio compression    | N/A  |
| Communication        | N/A  |
| Image Settings       | AWB, AGC Adjustable, Exposure Mode (Auto)<br>Sharpness, Saturation, Brightness & Contrast Adjustable |
| Image Enhancement    | Digital WDR, BLC, HLC, ROI   |
| Noise Reduction      | 3D-DNR   |
| Image Orientation    | Mirror/Flip  |
| Privacy Zone         | Yes  |
| Motion Detection     | Yes  |
| Analytics            | General Analytics: Camera Tampering<br>Standard Analytics: Line Crossing, Sterile Area               |
| Video Compression    | H.265 / H.264 / MJPEG (Substream only)   |
| Resolution           | 2MP (1920x1080) / D1 (704x576) / QVGA (480x240) / CIF (352x288)                                      |
| Multi-Stream         | Master Stream: 2MP (1920x1080) / 1MP (1280x720) (1~30fps) Substream: QVGA/D1/<br>CIF (1~30fps)       |
| Bit rate             | 64Kbps ~ 4Mbps@H.265 / 64Kbps ~ 6Mbps@H.264  |
| Encode Mode          | VBR/CBR  |
| Image Quality        | Five levels under VBR; Free adjustment under CBR   |
| IR Distance          | 40m (2 High-Power IR LED)  |
| Lens (Field of View) | 2.8-12mm (93.5°-31.9°)   |

## SPECIFICATIONS

|                     |  |
|---------------------|--|
| Iris                | Fixed Iris   |
| Lens Mount          | Ø14 Mount  |
| Protection Rate     | Water Proof: IP67  |
| Bracket             | 3-Axis Bracket   |
| Dimensions          | 220.8x79.4x81.2mm  |
| Weight (gross)      | ~650g  |
| Network             | RJ45 (+PoE)  |
| Power               | DC Socket  |
| Analog Video Output | No   |
| Audio Connectivity  | No   |
| SD Card             | Event/Schedule based Main/Substream recording (Up to 128Gb)                                  |
| Hard Reset Button   | Yes  |
| Alarm               | No   |
| Remote Monitoring   | IE Browsing, VMS Software, Provision Cam2 Mobile App   |
| User Access         | Supports simultaneous monitoring of up to 3 users with multi-stream real-time transmission   |
| Network Protocol    | IPv4, IPv6, TCP, UDP, DHCP, NTP, DDNS, 802.1X, RTSP, Multicast, UPnP, Email, FTP, HTTPS, QoS |
| ONVIF               | Yes  |
| Ethernet            | 100Mbps  |
| PoE                 | Yes  |
| Power Supply        | DC12V/~480mA / PoE/~6.5W   |
| Work Environment    | -30°C~60°C, 10%~90% Humidity   |
| Junction Box        | PR-JB12IP66 - PR-JB12IP64  |

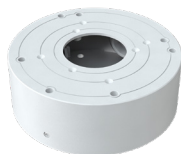
## DIMENSIONS



## ACCESSORIES



PR-JB12IP66



PR-JB12IP64