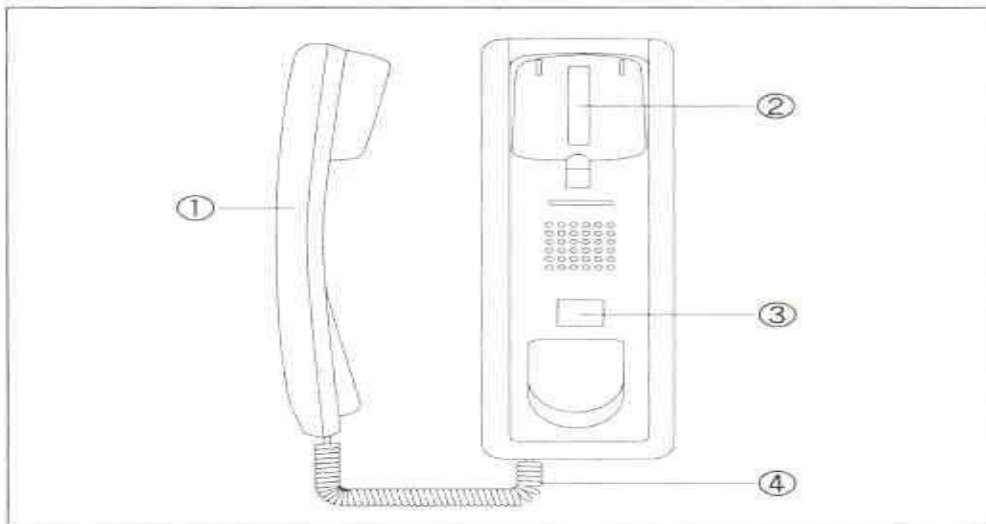




APARTMENT HOUSE INTERCOM (ROOMSTATION)

MODEL DP-KSS

CONTROLS AND FUNCTIONS



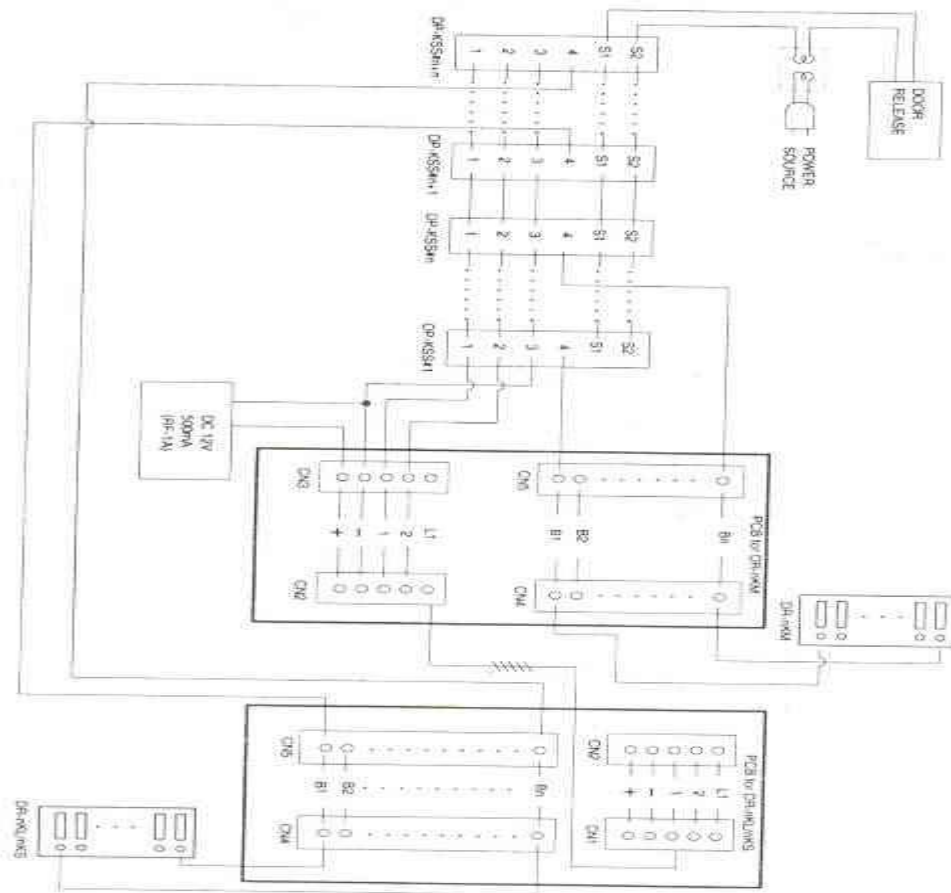
- ① HANDSET
- ② HOOK S/W
- ③ DOOR RELEASE BUTTON
- ④ SPRING CORD

OPERATION INSTRUCTION

1. Hear a call sound from receiver ① when visitor press the call button on the doorstation.
2. Converse with visitor after raise up handset.
3. After ascertain the visitor, press the door release button ③ to open door

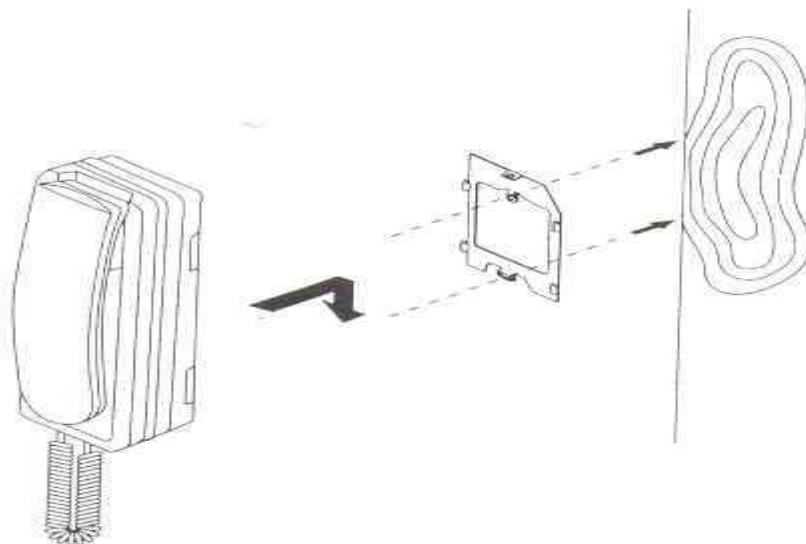
NOTE : No need to connect extra power by reason of it's supplied power source from doorstation

WIRING DIAGRAM



INSTALLATION

- 1) Please attach a bracket on the wall correctly with screw.
- 2) After the attachment of bracket, please adjust the groove of the product with a bracket and then pull it down.



E-mail : bigkim@commax.co.kr
 Homepage : <http://www.commax.co.kr>