

FTN-ST/AM

- Digital Anti-masking (AM only)
- 5m/2m narrow range
- 190° horizontal flexibility
- perfect pet immunity
- Super Multi Dimension Analysis Logic
- Double conductive shielding
- Intelligent AND logic



FTN-R/RAM

- complete battery operation
- Digital Anti-masking (RAM only)
- 5m/2m narrow range
- 190° horizontal flexibility
- perfect pet immunity
- Super Multi Dimension Analysis Logic
- Double conductive shielding
- Intelligent AND logic



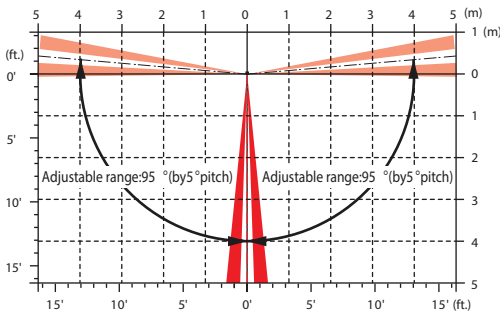
SPECIFICATIONS

Model	FTN-ST		FTN-AM	FTN-R	FTN-RAM
Detection method	Passive infrared				
PIR coverage	5× 1m (16'5" × 3'3")				
Detection length limit	2 m, 5 m (6'7", 16'5")				
Detectable speed	0.3 - 1.5 m/s (1' - 4'11"/s)				
Sensitivity	2.0 °C (at 0.6 m/s) (3.6 °F (at 2'/s))				
Operation voltage	9.5 - 18 V DC			2.5 - 10 V DC	
Power input	-			3 - 9 V DC (Lithium or Alkaline Battery)	
Current draw	17mA(max.) (at 12 V DC)	20mA(max.) (at 12 V DC)		9µ A(at stand-by) / 3mA(max.)(at 3 V DC)	10µ A(at stand-by) / 3mA(max.)(at 3 V DC)
Alarm period	2.0 ±1.0sec.				
Warm-up period	Approx. 60 sec. (LED blinks)			Approx. 120 sec. (LED blinks)	
Alarm output	N.C./N.O. Selectable 28 V DC 0.1 A (max.)			N.C./N.O. Selectable-Solid State Switch 10 V DC 0.01 A(max.)	
Trouble output	N.C. 28 V DC 0.1 A (max.), open when the cover is removed.			N.C./N.O. Selectable-Solid State Switch 10 V DC 0.01 A(max.)	
LED indicator	Light/Blink: Warm-up, alarm, masking detection (FTN-AM only)			Enable: During DIP switch 1 (WALK TEST MODE) or DIP switch 4 (LED) ON Disable: During normal operation Light/Blink: Warm-up, alarm, masking detection (FTN-RAM only)	
Operation temperature	-20 - +60 °C (-4 - +140 °F)				
Environment humidity	95% max.				
Weatherproof	IP55				
Mounting	Wall (Outdoor, Indoor)				
Mounting height	0.8 - 1.2 m (2'7" - 3'11")				
Weight	100 g (3.5 oz.)			190 g (6.7 oz.)	
Accessories	screw (3 × 20 mm) × 2			Connector for POWER and ALARM, connector for TROUBLE, plate nut × 2, screw (M3 × 10 mm) × 2, screw (3 × 20 mm) × 4, sponge for transmitter	

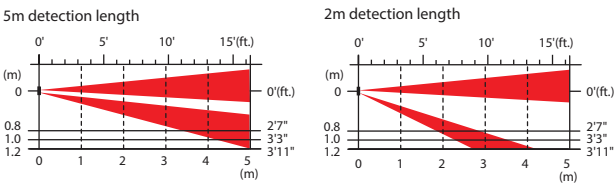
\*Specifications and design are subject to change without prior notice.

COVERAGES

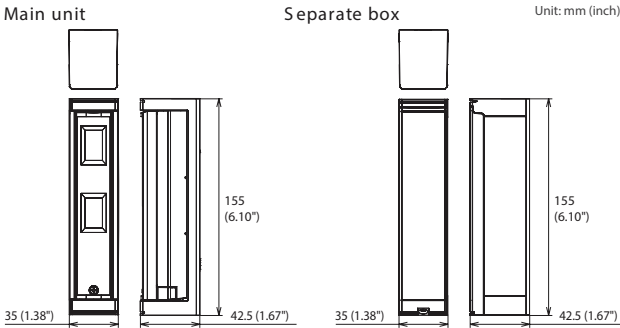
Top view



Side view



DIMENSION



OPTION

Wall tamper (WRS-02)  
for FTN-ST/AM



Wall tamper (WRS-03)  
for FTN-R/RAM



COMPACT  
OUTDOOR  
DETECTOR

fit  
series



fit for ALL

not only for a garden but also for a balcony  
not only for a wall side but also an area protection  
not only for a daytime but also for a nighttime



Official Partner:

IDS  
91 Escom Road, New Germany, 3610  
T: +27 (0)31 705 1373 | F: +27 (0)31 705 4445  
E: info@idsprotect.com  
www.idsprotect.com



## fit for ALL

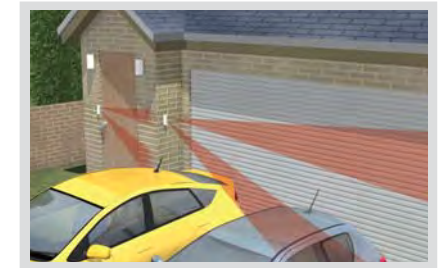
### fit at window



### fit at poolside



### fit at garage



### fit at sidewalk



### fit at balcony

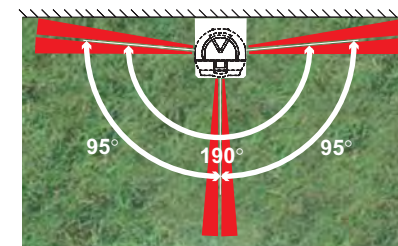


### fit at front entrance



## Product features

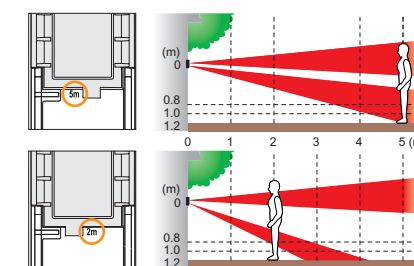
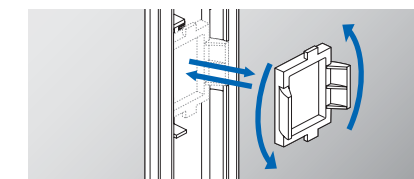
### Built in bracket (190°)



Built-in bracket enables horizontal rotation of 190 degrees. Unwanted object can be avoided with ease.



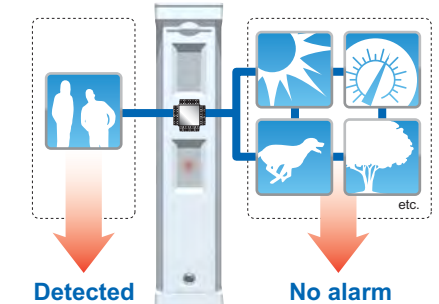
### 5m/2m switchable lens



Changing the detection length is easy. Adjust the mounting height or simply turn the lens upside down.

### SMDA Logic

SMDA(Super Multi Dimension Analysis) Logic brought the ultimate sensitivity optimization. Every motion is analyzed before signaling an alarm to reduce false and missed detections. Consequently environment reaction capability becomes 24 times more.



# fit at home

amplification through simplification

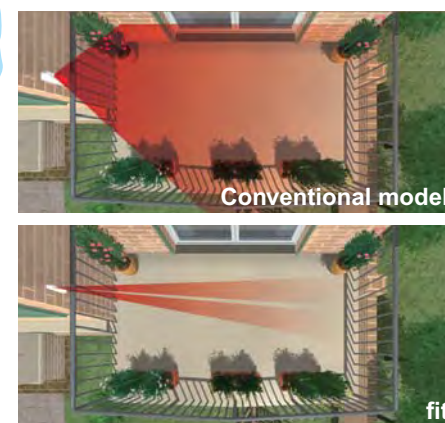
### Compact design

Security is important but I don't want to disturb how my house looks. I like "fit".



### Flexibility

"fit" is the perfect option for a balcony with greens because its detection area is so flexible.



## Battery operated model

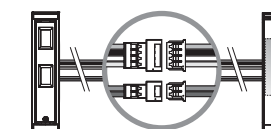
### model FTN-R/RAM

Save installation time and cost  
FTN-R/RAM are battery operated model and therefore requires no complicated wiring. It saves installation time and cost.



### Easy connection

FTN-R/RAM can be connected to the transmitter with connectors. It makes installation and battery replacement much easier and quicker.



**Maximum transmitter size**  
H130 X W30 X D35mm  
(H5.12" X W1.18 X 1.38)

### Multi fixing separate box

