

# Mini Dome Camera

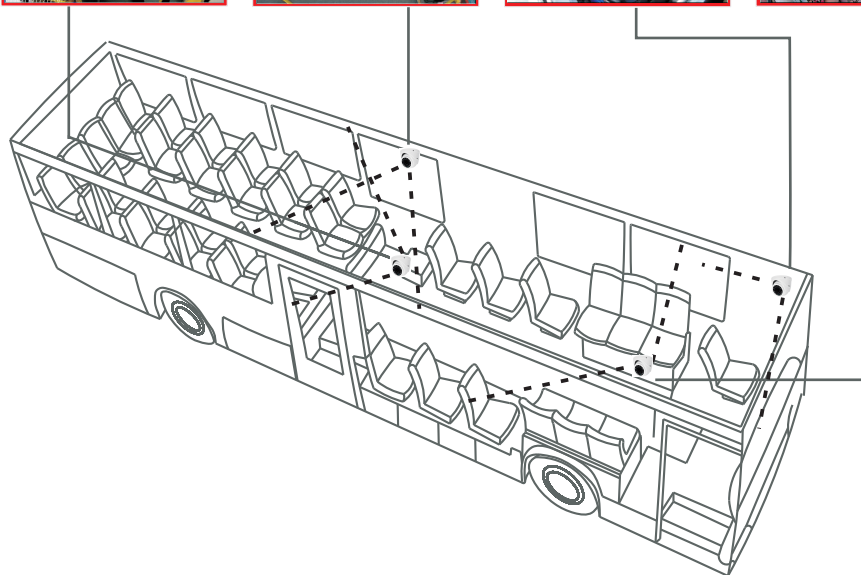
## Advantages of Mini Dome Camera

Specialized Structure for Vehicle:  
easy assembly and disassembly;  
lockable angle; anti-vibration



Anti-jamming & Low-power Design:  
avoid vehicle circuit interference;  
support high temperature on vehicle  
roof; reduce power consumption by  
30%.

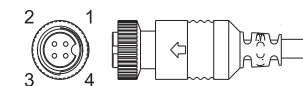
Adapt to Volatile Environments:  
ultra-wide color temperature for  
color fidelity



## Specifications

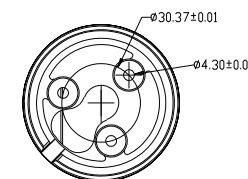
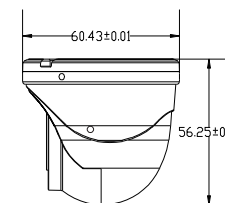
<b>Model No.</b>	<b>DI-390AHD28W(4pin)</b>
<b>IP Rating</b>	<b>IP66</b>
<b>Type</b>	<b>RemovableIR Cut Filter</b>
<b>Signal System</b>	<b>NTSC</b>
<b>Pick Up Device</b>	<b>1/2.9" 2.2 Mega Pixels CMOS</b>
<b>Picture Elements</b>	<b>1920(H)X1080(V)</b>
<b>Min Illumination</b>	<b>0Lux with IR LED 12 pieces</b>
<b>S/N Ratio</b>	<b>≥52dB</b>
<b>Lens</b>	<b>2.8mm Board Lens</b>
<b>3D/2D</b>	<b>ON</b>
<b>SENS-UP</b>	<b>ON</b>
<b>IR SMART</b>	<b>ON</b>
<b>White Balance</b>	<b>ATW</b>
<b>Back Light Compensation</b>	<b>OFF</b>
<b>DWDR</b>	<b>ON/OFF</b>
<b>Video Out-put</b>	<b>AHD(4 pins air line)</b>
<b>Power Supply</b>	<b>DC12V ±10%</b>
<b>Current Consumption</b>	<b>320mA ( MAX )</b>
<b>IR Effect Distance</b>	<b>10m ( 32.8ft )</b>
<b>Dimension</b>	<b>Φ60.5×56.2mm ( 2.38"×2.22" )</b>
<b>Weight</b>	<b>200g ( 7.0oz )</b>
<b>Storage Temperature</b>	<b>-30~+60°C ( -22~+140°F )</b>
<b>Operating Temperature</b>	<b>-30~+40°C ( -22~+104°F )</b>

Video Output:  
Aviation Plug Connector



Aviation RS765-4 (Female)

1---12V DC(+)    3---AUDIO  
2---GND        4---AHD VIDEO



## Attentions

- Please carefully read this manual before you power on and use the camera.
- Do not take apart the camera; if any problems, please contact us or local distributors.
- Please pay attention to the demands of working temperature and performance environment of the camera; do not use it in either too low or too high temperature – it only works from -30°C to +40°C (From -22°F to 104°F); avoid water or rain; minimize dust or moisture erosion, so as not to damage camera or affect its functions.
- Avoid direct sunlight when the camera is in performance, otherwise the Sensor would be damaged.
- Do not touch the surface of the lens; use cotton swab or lens paper to wipe dirt; if difficult, use deluted water with neutral detergent to wipe it out; never use corrosive solution.
- Never install this camera near / on a radiator or a heating resistor.
- When you finish installing the camera and adjusting the angle, please appropriately lock the screws beside the lens, so that the driver and conductor won't inadvertently touch and change the monitoring angle.
- When the integral installation is finished, please make sure that it won't fall down and then hurt people or damage goods caused by vehicle vibration.