



# AC1350 Wireless Dual Band Router

Five antennas for faster AC Wi-Fi and greater coverage

Archer C60



450Mbps + 867Mbps  
Dual Band Wi-Fi



MU-MIMO Technology for  
2× Faster Performance



Beamforming Technology  
for Better Coverage

# Highlights

## Household Wi-Fi at Streaming Speeds

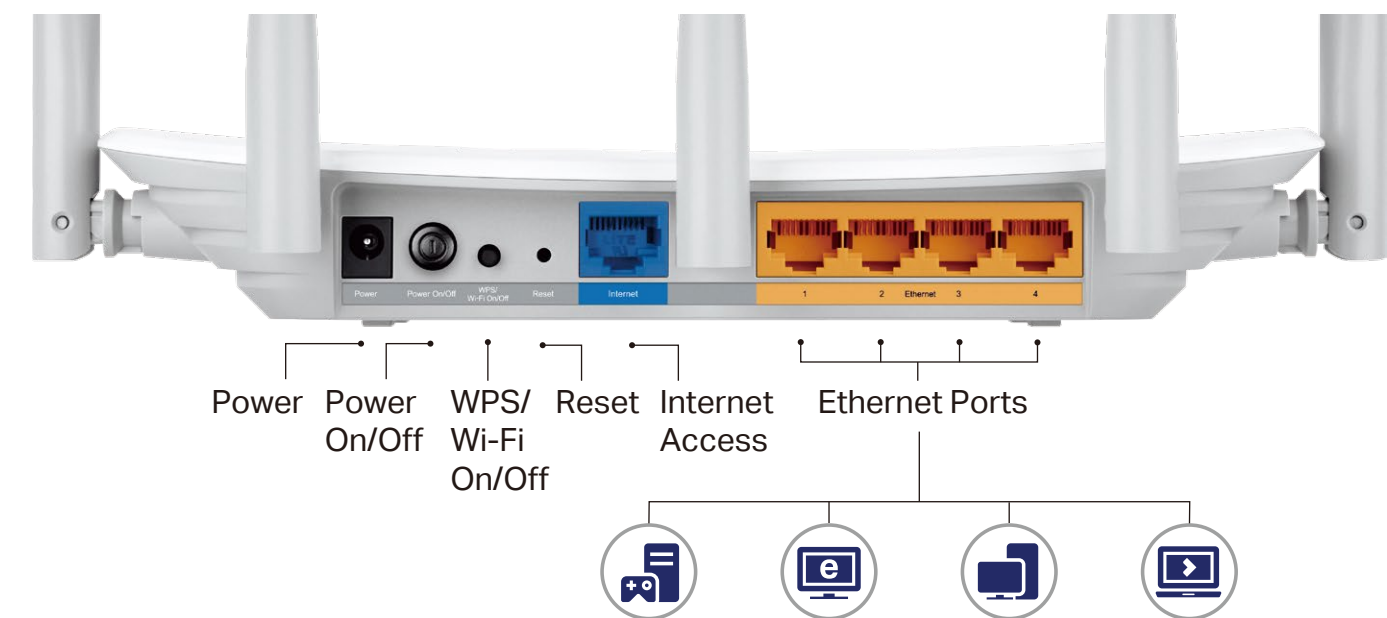
Press play and forget about buffering with the Archer C60. Five external antennas provide maximum omni-directional wireless coverage and reliability for all of your HD streaming, gaming, and networking needs. The strong 2.4GHz (450Mbps) Wi-Fi band is perfect for sending emails, browsing the web, and listening to music. The router's 5GHz band reaches 867Mbps so you can game online and stream in HD simultaneously.

- 2.4GHz 450Mbps
- 5GHz 867Mbps



## Fast Ethernet

Enjoy fast, reliable wired connections for gaming and streaming in the best quality.



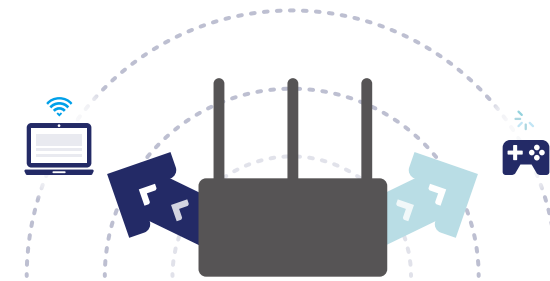
# Highlights

## MU-MIMO for 2× Faster Connections

MU-MIMO technology allows the Archer C60 to serve 2 devices at once, reducing wait time and increasing Wi-Fi throughput.



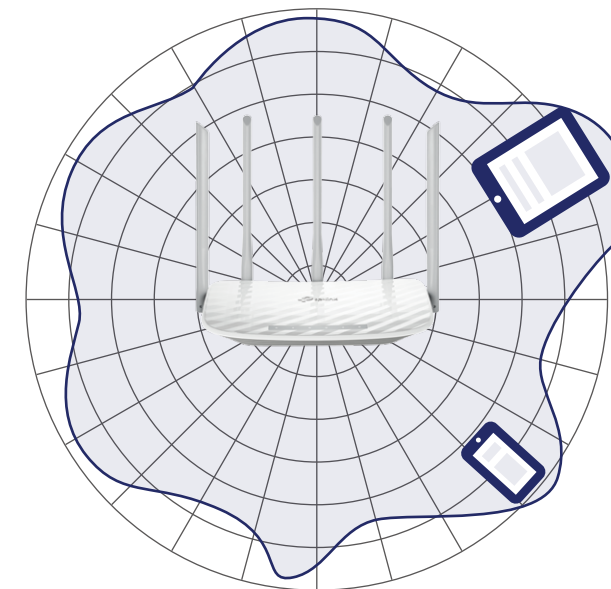
MU-MIMO Router  
Simultaneously sends data to multiple devices



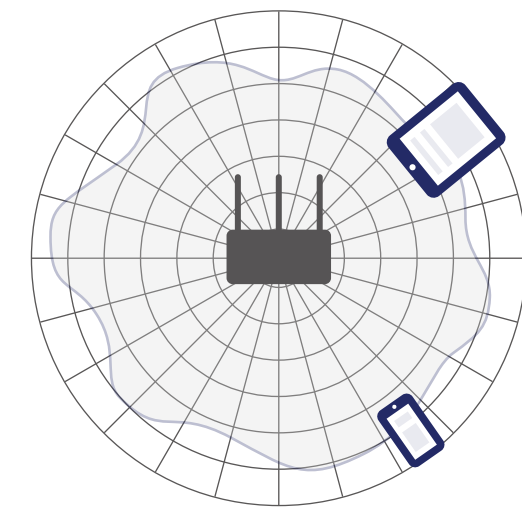
Traditional Router  
Sends data to one device at a time

## Beamforming for Better Coverage

Five external omni-directional antennas create strong, clear, dependable Wi-Fi throughout your home. Beamforming detects the location of your connected devices and concentrates the Archer C60's signal towards them to optimize wireless connections.



Archer C60



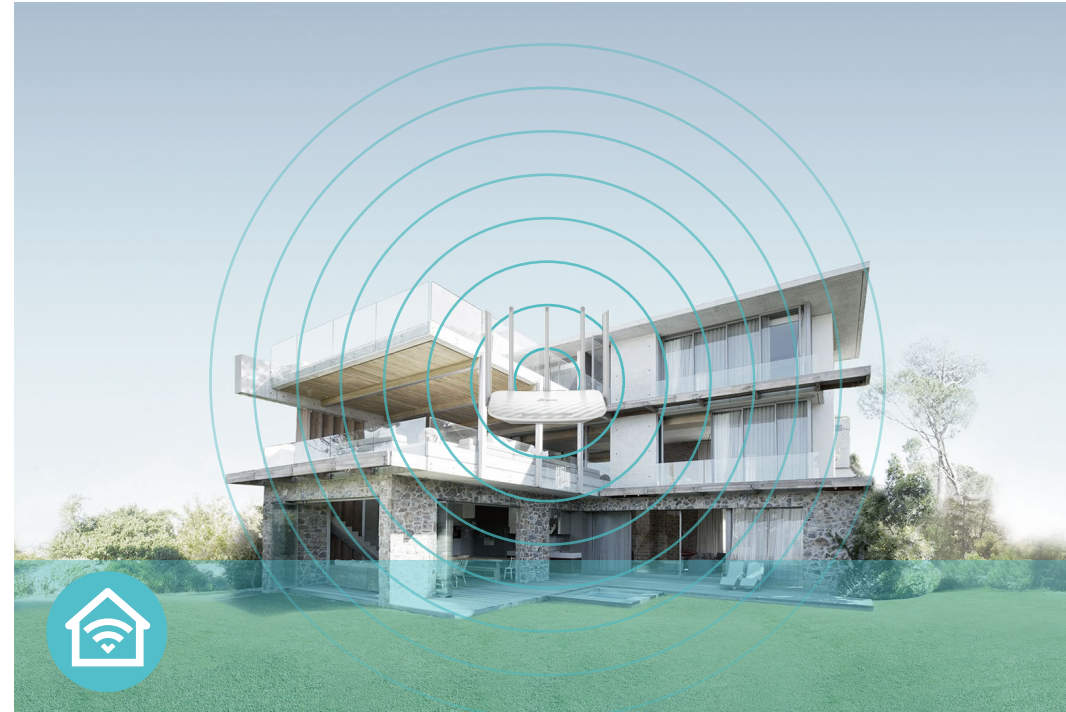
Regular Router

# Features



## Speed

- **Ultimate Wireless Speed** – Combined wireless speeds up to 450 Mbps (over 2.4GHz) and 867 Mbps (over 5GHz)
- **MU-MIMO Technology** – Simultaneously exchanges data with several devices, achieving speeds which are 2x faster than standard AC routers
- **Support 802.11 ac** – Provides a data transfer rate 3 times faster than 802.11n for each stream



## Wi-Fi Range

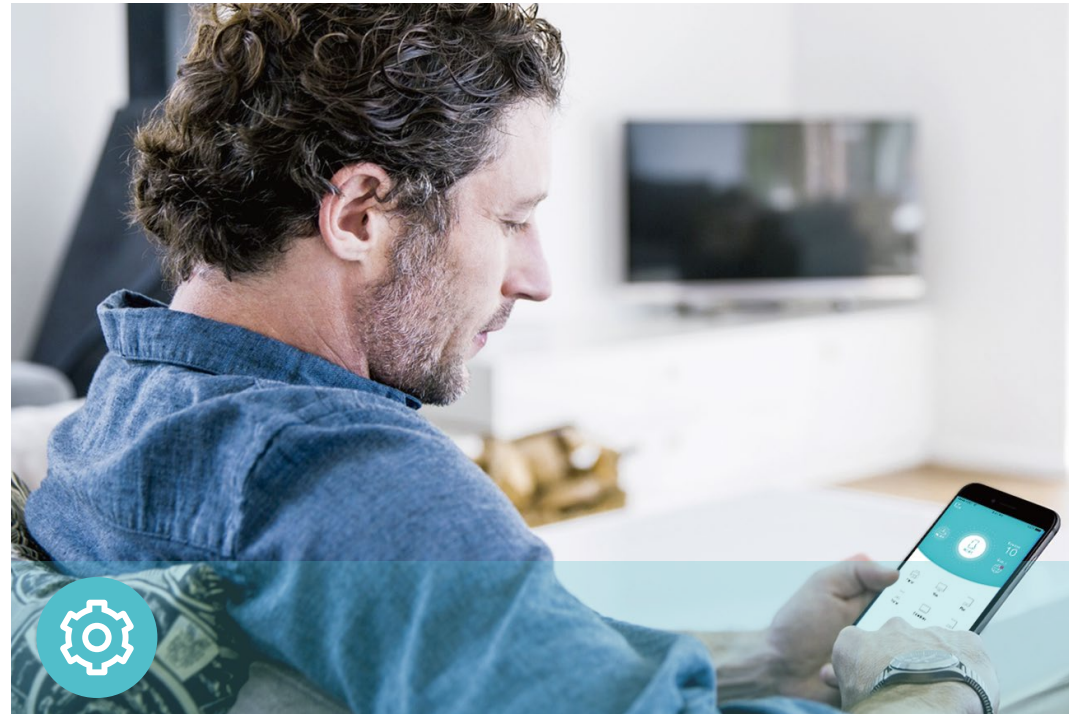
- **Ultimate Range Wi-Fi** – 5 dual band high-performance antennas with a high-powered amplifier ensure the widespread Wi-Fi coverage and a stable connection
- **Wi-Fi with Beamforming** – Beamforming technology locates the connected devices and further improves the Archer C60's range and the signal strength to each mobile device, delivering a more reliable and efficient wireless connection



## Reliability

- **Simultaneous Dual Band** – Separate Wi-Fi bands enable more devices to be connected to your network without a drop in performance
- **Easy Bandwidth Management** – Advanced QoS makes it easier for you to manage the bandwidth of connected devices

# Features



## Ease of Use

- Intuitive Web UI – Ensures quick and simple Installation without hassle
- Fast Encryption – One-touch WPA wireless security encryption with the WPS button
- Wi-Fi On/Off – Turn on/off wireless radio as needed using the Wi-Fi On/Off button
- Power On/Off – Conveniently power on or off your router as required
- Hassle-free Management with Tether App – Network management is made easy with the TP-Link Tether App, available on any Android and iOS device
- Online Upgrade – Keeps you informed of the latest firmware updates, ensuring your router stays at its best



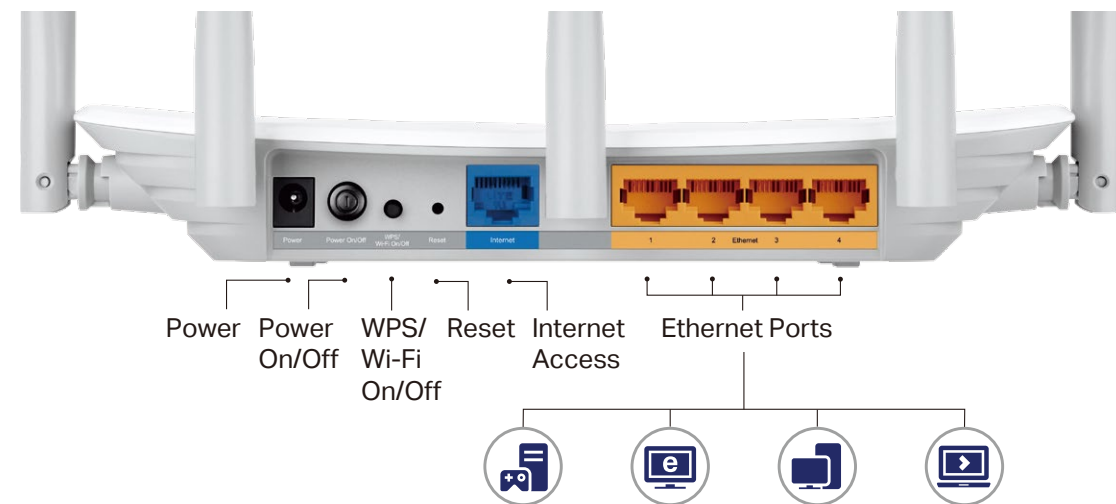
## Security

- Guest Network – Keep your main network secure by creating a separate network for friends and visitors
- Access Control – Establish a whitelist or blacklist to allow or restrict certain devices to access the internet
- Parental Controls – Restrict internet access time and contents for children devices
- VPN Server – PPTP VPN and OpenVPN are supported, making it easy to set up a secure connection between your private network and the internet
- Encryptions for Secure Network – WPA-PSK and WPA2-PSK encryptions provide active protection against security threats

# Specifications

## Hardware

- Ethernet Ports: 4 10/100Mbps LAN Ports, 1 10/100Mbps WAN Port
- Buttons: WPS/Wi-Fi On/Off Button, Power On/Off Button, Reset Button
- Antennas: 5 Fixed Omni Directional Antennas
- External Power Supply: 12VDC/1A
- Dimensions (W x D x H): 9.1 × 5.7 × 1.4 in (230 × 144 × 37 mm)



## Wireless

- Wireless Standards: IEEE 802.11ac/n/a 5GHz, IEEE 802.11b/g/n 2.4GHz
- Frequency: 2.4GHz and 5GHz
- Signal Rate: 867Mbps at 5GHz, 450Mbps at 2.4GHz
- Transmit Power:
  - CE: <20dBm (2.4GHz), <23dBm (5GHz)
  - FCC: <25dBm (2.4GHz), <27dBm (5GHz)
- Reception Sensitivity:
  - 5GHz:
    - 11a 6Mbps: -94dBm, 11a 54Mbps: -78dBm
    - 11ac VHT20: -71dBm, 11ac VHT40: -66dBm, 11ac VHT80: -62dBm
  - 2.4GHz:
    - 11g 54Mbps: -78dBm, 11n HT20: -75dBm, 11n HT40: -72dBm
- Wireless Function: Enable/Disable Wireless Radio, WDS Bridge, WMM, Wireless Statistics
- Wireless Security: Enable/Disable SSID Broadcast, 64/128-bit WEP, WPA/WPA2, WPA-PSK/WPA-PSK2 encryptions, QSS, Wireless MAC Filter

# Specifications

## Software

- Quality of Service: WMM, Bandwidth Control
- WAN Type: Dynamic IP, Static IP, PPPoE, PPTP(Dual Access), L2TP(Dual Access), Bigpond
- Management: Access Control, Local Management, Remote Management
- DHCP: Server, DHCP Client List, Address Reservation
- Port Forwarding: Virtual Server, Port Triggering, UPnP, DMZ
- Dynamic DNS: DynDns, NO-IP, TP-Link
- VPN Server: PPTP, Open VPN
- Access Control: Parental Controls, Local Management Control, Blacklist, Whitelist
- Firewall Security: DoS, SPI Firewall, IP and MAC Address Binding
- Protocols: IPv4, IPv6
- Guest Network: 2.4GHz guest network x 1, 5GHz guest network x 1

## Others

- Certification:  
CE, FCC, RoHS
- System Requirements:  
Microsoft Windows 98SE/NT/2000/XP/Vista™/7/8/8.1/10, MAC OS, NetWare, UNIX or Linux  
Internet Explorer 11, Firefox 12.0, Chrome 20.0, Safari 4.0, or other Java-enabled browser  
Cable or DSL Modem  
Subscription with an internet service provider (for internet access)
- Environment:  
Operating Temperature: 0°C~40°C (32°F ~104°F)  
Storage Temperature: -40°C~70°C (-40°F ~158°F)  
Operating Humidity: 10%~90% non-condensing  
Storage Humidity: 5%~90% non-condensing
- Package Contents  
AC1350 Wireless Dual Band Router Archer C60  
Power Adapter  
RJ45 Ethernet Cable  
Quick Installation Guide



For more information, please visit

<http://www.tp-link.com/en/products/details/Archer-C60.html>

or scan the QR code left

Attention: This device may only be used indoors in all EU member states and EFTA countries.

Specifications are subject to change without notice. TP-Link is a registered trademark of TP-Link Technologies Co., Ltd. Other brands and product names are trademarks or registered trademarks of their respective holders. Copyright ©2017 TP-Link Technologies Co., Ltd. All rights reserved.

TP-Link Technologies Co., Ltd.

Building 24 (floors 1, 3, 4, 5) and 28 (floors 1-4) Central Science and Technology Park, Shennan Rd, Nanshan, Shenzhen, China

[www.tp-link.com](http://www.tp-link.com)

[www.tp-link.com](http://www.tp-link.com)

TP-Link AC1350 Wireless Dual Band Router Archer C60