

### Electrical Characteristics

### BCT300-24

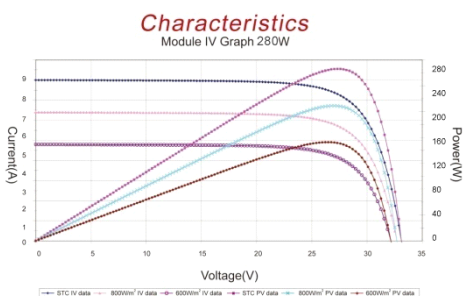
Maximum power at STC (Pmax)	300W
Optimum operating voltage (Vmp)	34.4V
Optimum operating current (Imp)	8.72A
Open-circuit voltage (Voc)	43.2V
Short-circuit current (Isc)	9.52A
Short-circuit current temperature coefficient	(0.065±0.015) %/°C
Open-circuit voltage temperature coefficient	- (80±10) mV/°C
Peak power temperature coefficient	- (0.5±0.05) %/°C
NOCT (Air 20°C; Sun 0.8kW/m wind 1m/s)	47±2°C
Operating temperature	-40°C to 85°C
Maximum system voltage	1000V DC
Power tolerance	±3%

STC: Irradiance 1000W/m<sup>2</sup>, Module temperature 25°C, AM=1.5

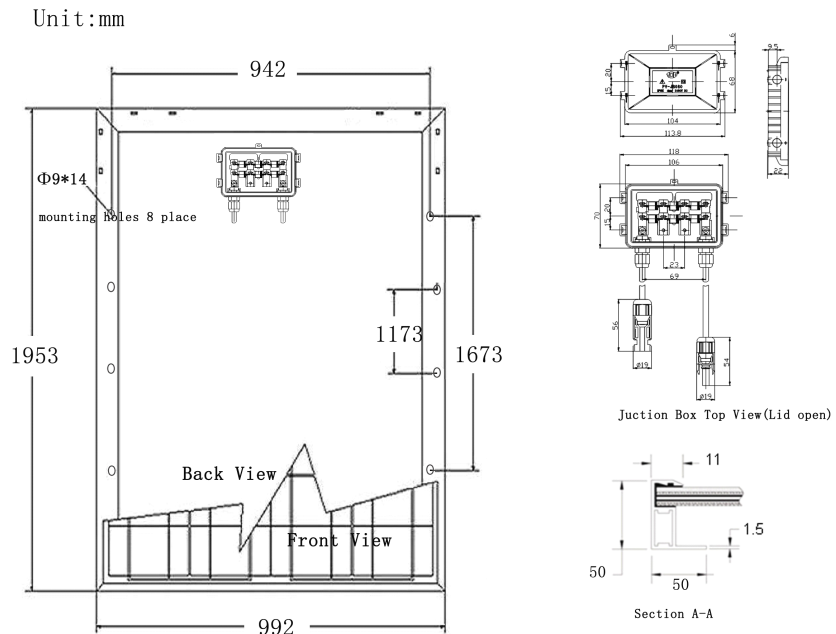
### Features

- Nominal 24V DC for standard output.
- High efficiency.
- Outstanding low-light performance.
- High transmission tempered glass.
- Rugged design to withstands high wind pressure and snow load, easy installation.
- Aesthetic appearance.
- Design to meet unique demand of customer.
- 25 year module output warranty.

### Characteristics



### Dimension



### Specification

### BCT300-24

Cell	Poly-crystalline silicon solar cells
No. of cell and connection	72 (6×12)
Dimension of module	1956mm×992mm×45mm
Weight	27.0kg

Specifications are subject to change without notice at any time.